



University Hospitals
Plymouth
NHS Trust

With Rob Harder

CTO

University Hospitals Plymouth NHS Trust

About University Hospitals Plymouth NHS Trust

- Largest hospital in the South West Peninsula with a secondary care catchment of 450,000 people
- Part of the Devon STP
- IT supports 12,000 users and over 9,000 end user devices across 50 sites
- 2 datacentres hosting over 200 Clinical and Corporate IT systems

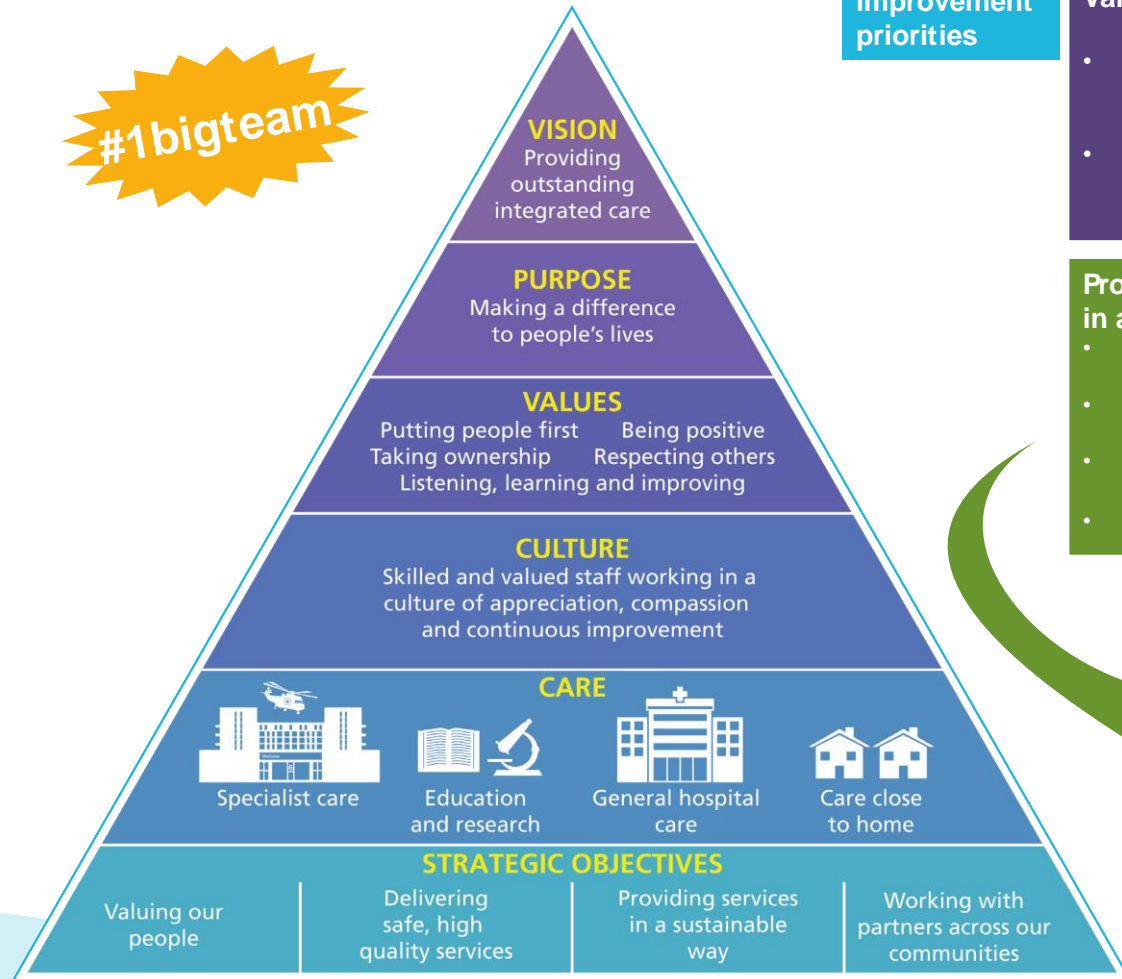


Our strategic direction



University Hospitals
Plymouth
NHS Trust

#1bigteam



Our improvement priorities

Valuing our people

- Increasing nursing and clinical professions capacity
- Increasing medical capacity

Delivering safe, high quality services

- Reducing harm events
- Securing regulatory compliance

Creating an improvement culture

Providing services in a sustainable way

- Reducing patient time in beds
- Fully utilising key assets (e.g. theatres and imaging)
- Changing the outpatient model
- Tactical investment in digital

Working with partners across our communities

- Improving the community interface
- Optimising peninsula services
- Integrating services



Our top three improvement challenges

- Reduce avoidable admissions of frail elderly patients by seven per day
- Increase scanner and theatre session utilisation to 85%
- Reduce outpatient routine follow-up appointments physically seen in a hospital setting by 35%

The Challenge

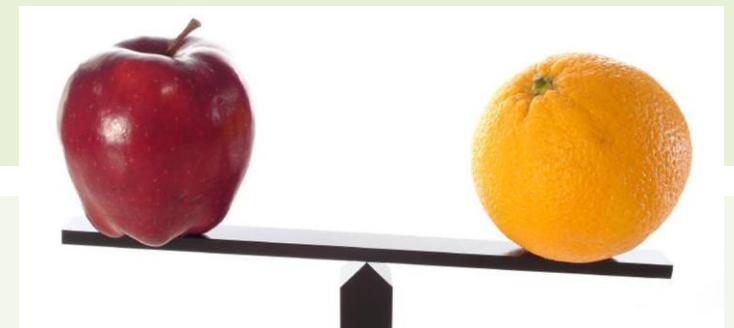
- On-premise infrastructure reaching end of life
- Required replacement with the scalability and flexibility to support 2,000+ users
- Strict cost constraints
- Challenging migration timescales

Failures/
Support Cost



The Approach

- 'All in' public cloud evaluated
- Scalability of public cloud on premises
- Hybrid Cloud ready
- Best value for money



The Solution

- Hyper Converged Infrastructure to deliver a private cloud
- Migration phases completed on time, on budget with limited disruption
- Data centre capacity boosted 30%
- Hardware footprint reduced by a factor of 6



Next Steps

- Launch new digital applications on the platform
- Migrate over diagnostic imaging system
- VDI
- Hybrid Cloud with Azure

