

# Foundation Model AI in the Public Sector

Renate Samson – Associate Director Society, Justice and Public Services

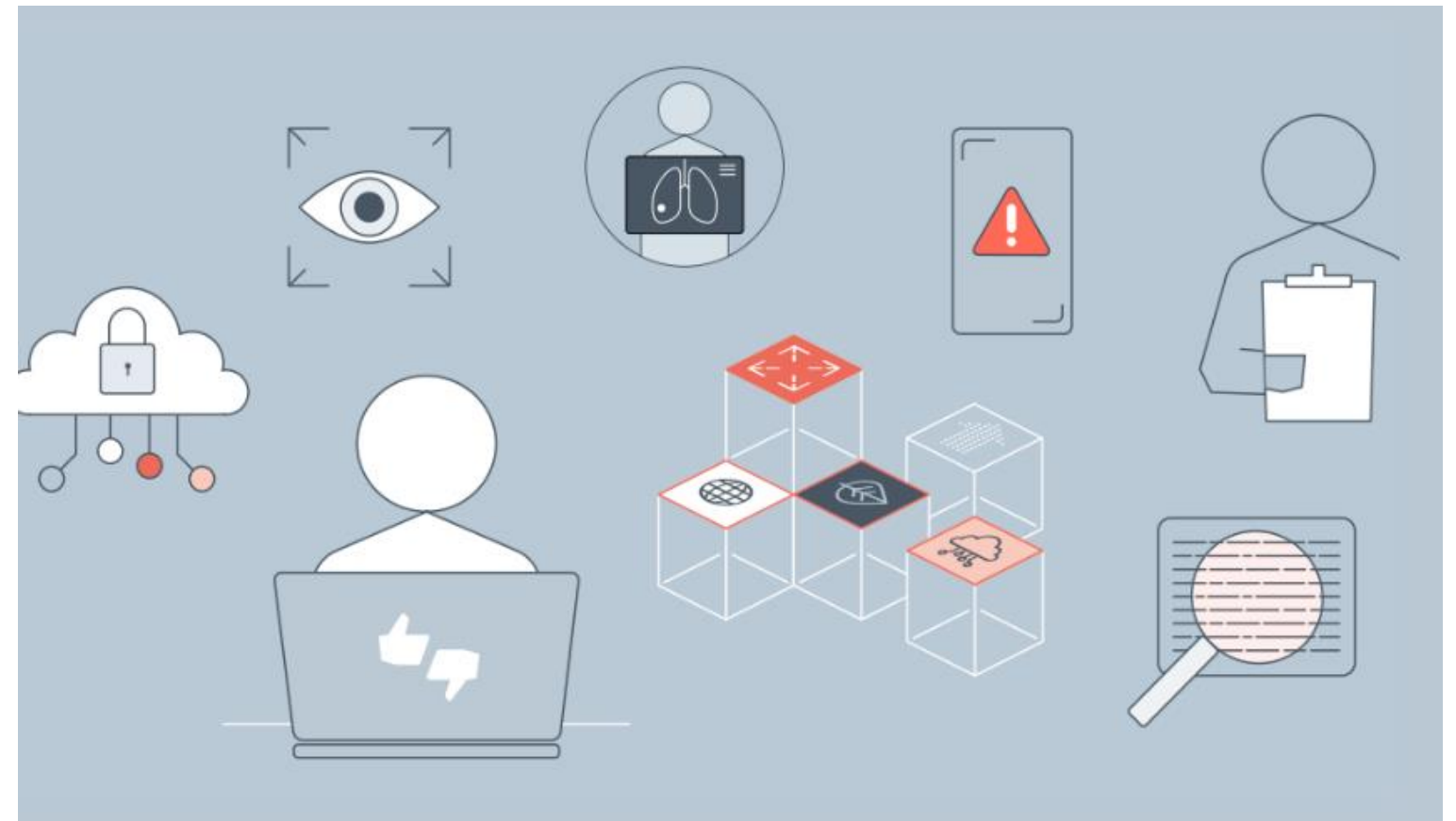
18<sup>th</sup> October 2023



---

The Ada Lovelace Institute is an independent research institute with a mission to make data and AI work for people and society.

The Society, Justice and Public Services Directorate evidences the impact data-driven technologies and AI are having.





Who?

What?

When?

Why?

Where?

---

Resource

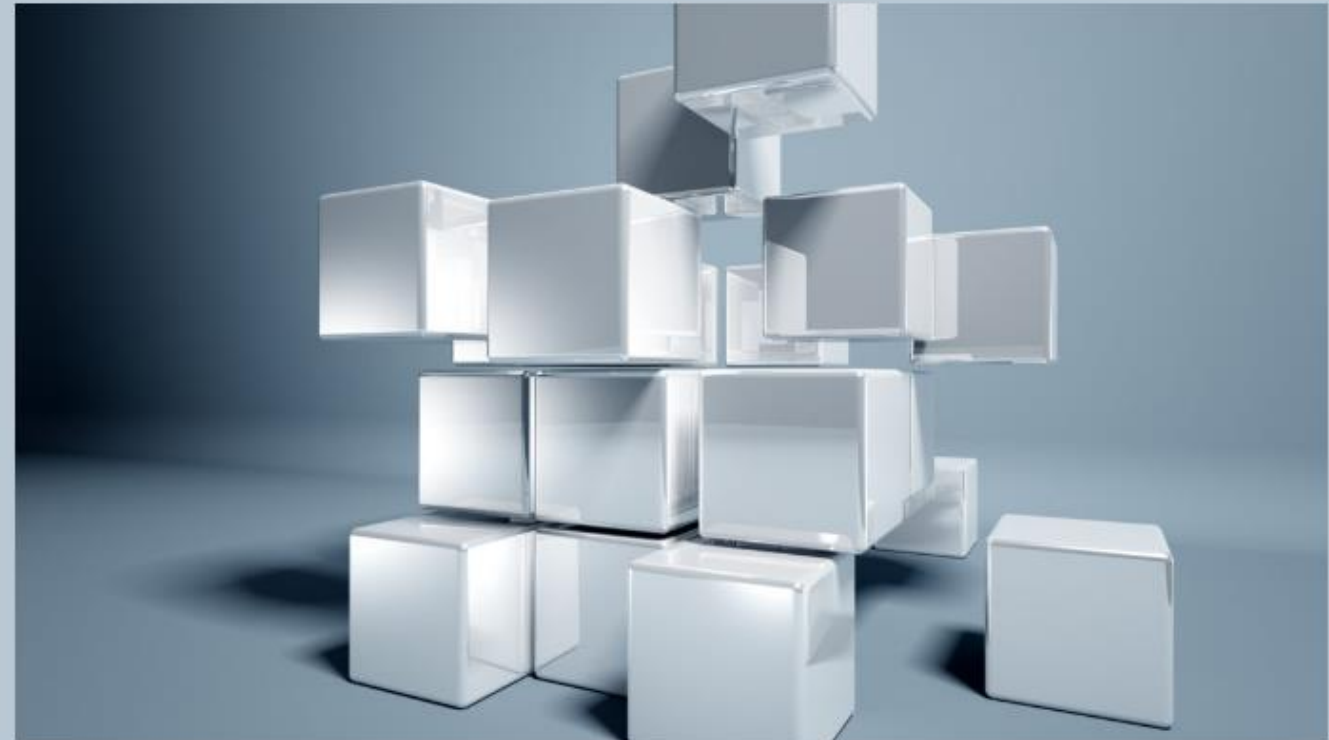
# Explainer: What is a foundation model?

This explainer is for anyone who wants to learn more about foundation models, also known as 'general-purpose artificial intelligence' or 'GPAI'.

Elliot Jones

17 July 2023

Reading time: 37 minutes



---

## Document analysis



## Decision support



## Customer service improvements



## Knowledge management





Risks

Unintended consequences

Limitations

---

Ethical standards for procurement

Community engagement

Independent third-party audits





Ada  
Lovelace  
Institute