



The **Cardiff**  
**Commitment**  
**Addewid Caerdydd**

Ambition | Opportunities | Skills • Uchelgais | Cyfleoedd | Sgiliau



**Curriculum Team**  
**Tîm Cwricwlwm**

The **Cardiff Commitment** | **Addewid Caerdydd**

**Sarah King**

**Curriculum Achievement Officer**

 **@cdfcuric**

FOLLOW US / DILYNWCH NI



[www.cardiffcommitment.co.uk](http://www.cardiffcommitment.co.uk)  
[www.addewidcaerdydd.co.uk](http://www.addewidcaerdydd.co.uk)





# maptionnaire

- Maptionnaire is a community engagement platform, which is a complete digital tool set available to support the user in public participation.
- It enables the user to manage the entire engagement process in one place.
- The software is browser-based and works with any device. The tool consists of different modules, including:
  - Design, Collect & Analyse
  - Gamified Decision Making
  - Real-time feedback mapping
  - 3D Collaboration

# maptionnaire

- Child Friendly Cities – Local Development Plan project.
- Aim of this project was to raise awareness of the LDP and role of a planner as well as gathering children’s opinions about their local area.
- Move away from Google Forms and utilise an innovative engagement tool.
- Evaluated a number of different tools.
- Gamified element of Maptionnaire.
- Respondents can remain anonymous.

## Local Development Plan Project

- Worked with teachers from focus schools, Tim Gill (consultant), Cardiff Planning Department and Child Friendly Cities to develop the questions.
- Trialled this with 3 schools.
- Children's and teachers feedback used to make any changes.
- Used as part of Cardiff's first ever Virtual Grand Council.

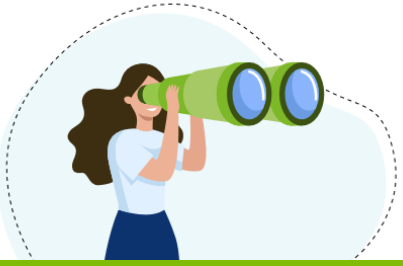




Over 40 schools attended  
virtually



1000+ children completed  
the survey



## Feedback from pupils:

"I loved using Maptionnaire because it put my opinions about Cardiff out in the world."

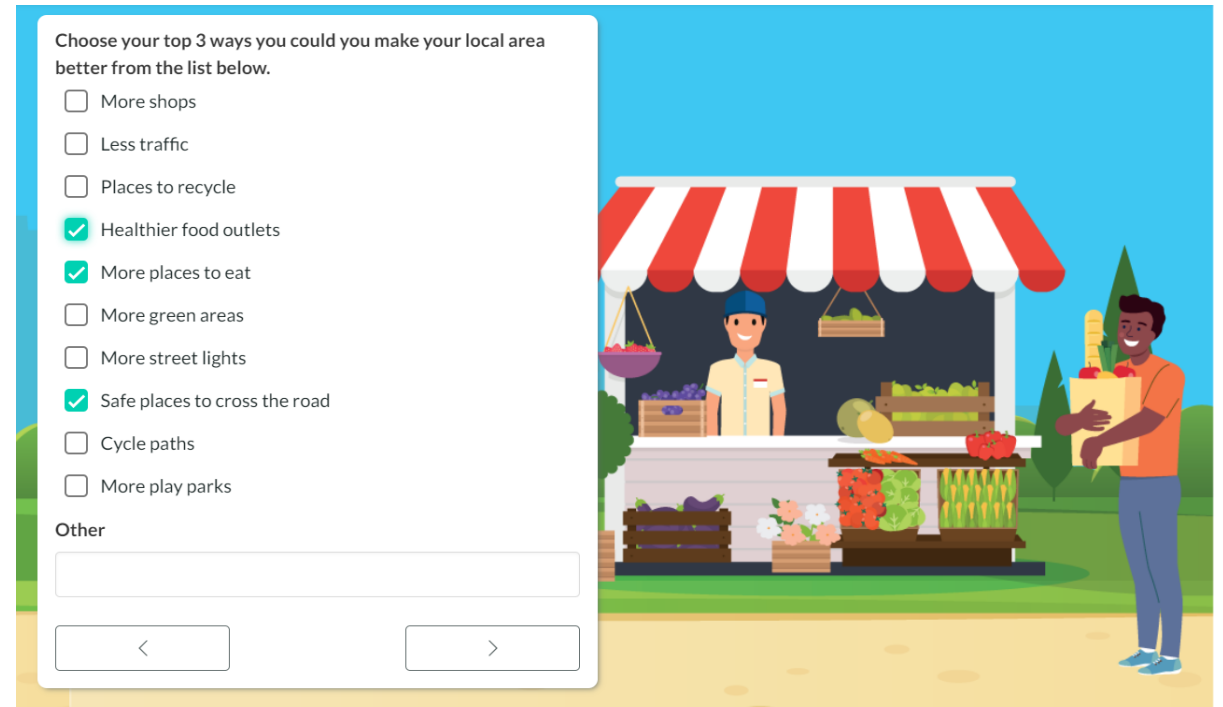
"I really enjoyed using Maptionnaire because I had the wonderful feeling of being responsible and I felt very grown up using it, I really thought about my decisions."

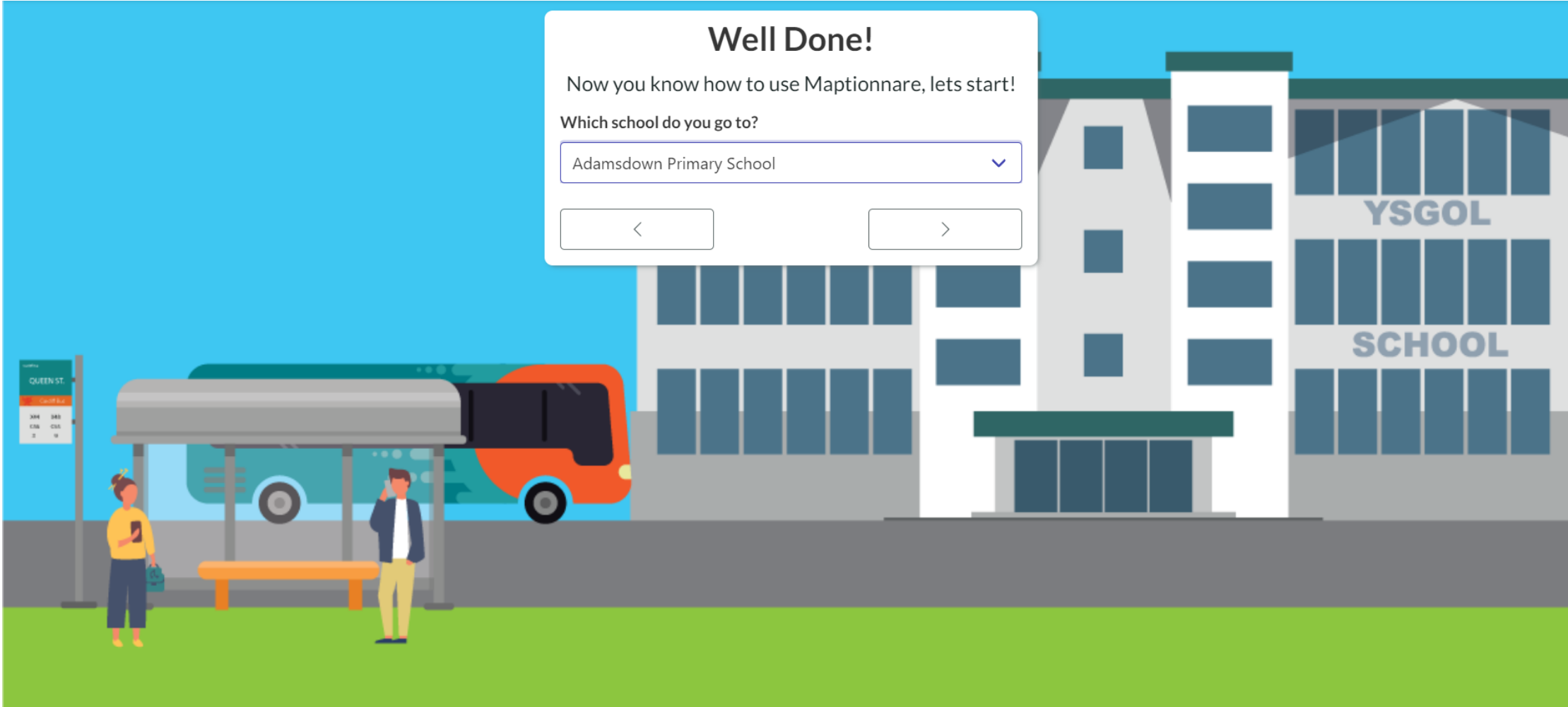
"I really loved Maptionnaire as it gave me the freedom to express my opinion."

"The budget game at the end was fantastic, as I considered my choices and thought about what all the space could be used for which made me feel responsible."



# Types of questions





## Well Done!

Now you know how to use Maptionnare, lets start!

Which school do you go to?

FOLLOW US / DILYNWCH NI



[www.cardiffcommitment.co.uk](http://www.cardiffcommitment.co.uk)  
[www.addewidcaerdydd.co.uk](http://www.addewidcaerdydd.co.uk)





Drop a pin on the map to show:

- My Favourite Place 😊
- My Least Favourite Place 😞

My Favourite Place

I like this place because...

- It is clean
- I feel safe there
- I can play there
- I can get there easily to meet my friends
- I am allowed there on my own
- I can explore it freely
- Other

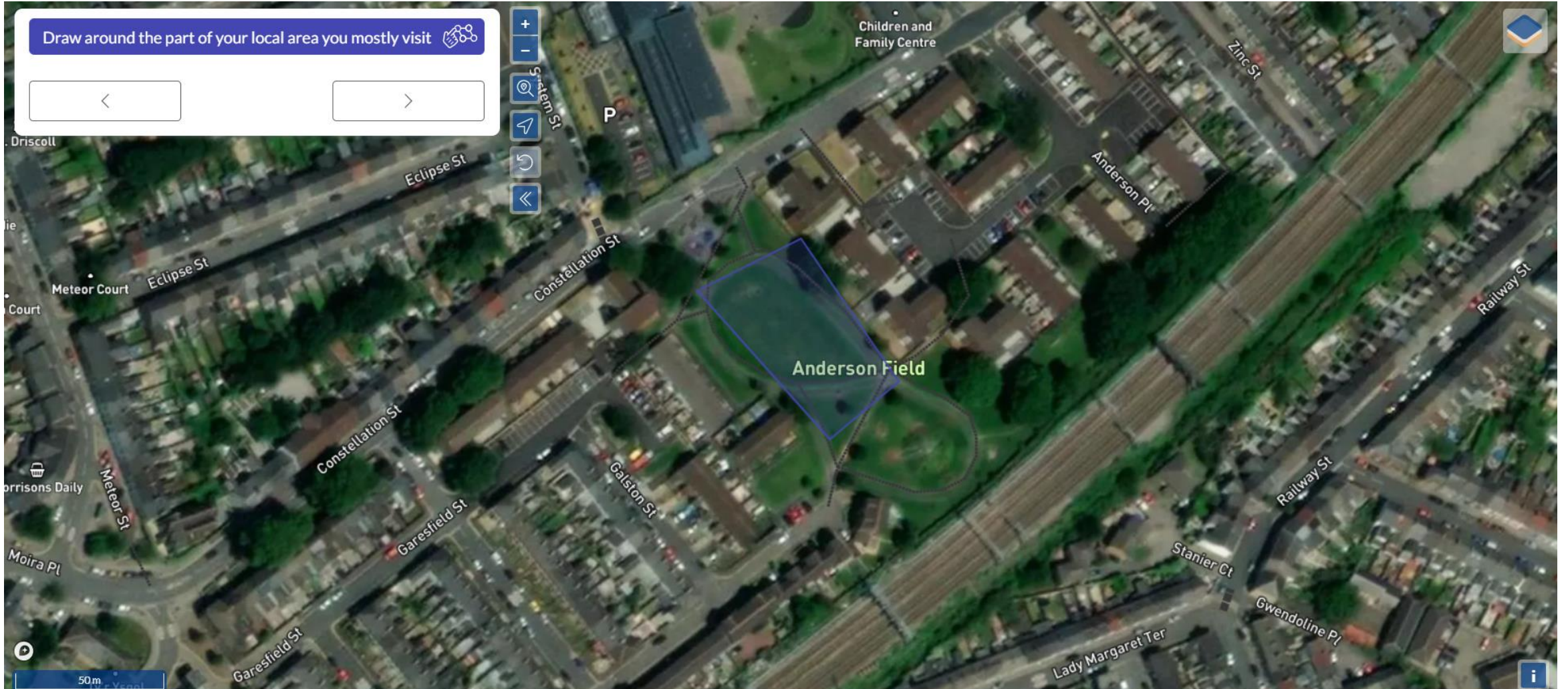
Are there other reasons why you like this place?

Upload a picture of your favourite area below

Upload ↑

Delete 🗑️ Done ✓





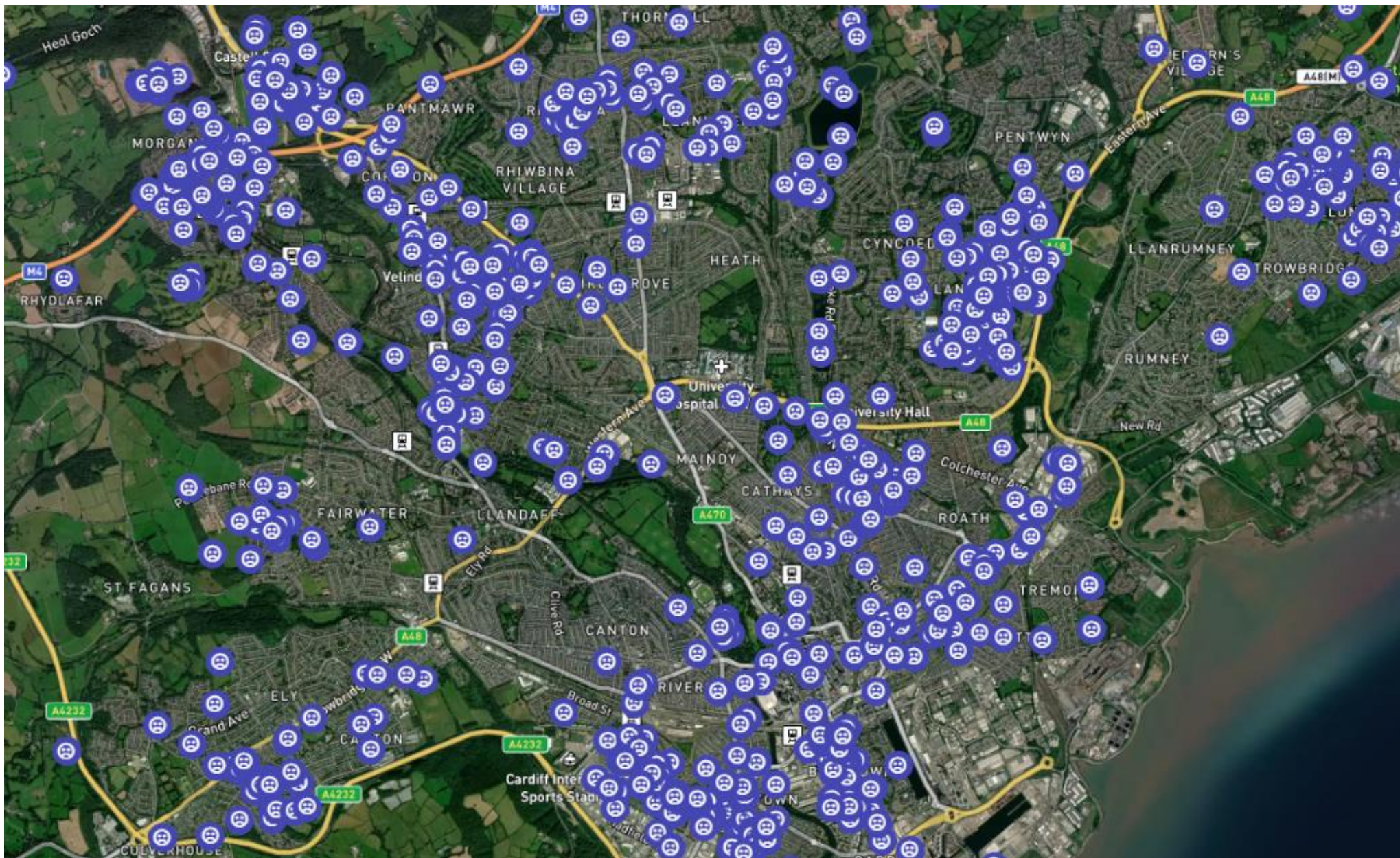
FOLLOW US / DILYNWCH NI



[www.cardiffcommitment.co.uk](http://www.cardiffcommitment.co.uk)  
[www.addewidcaerdydd.co.uk](http://www.addewidcaerdydd.co.uk)







FOLLOW US / DILYNWCH NI



[www.cardiffcommitment.co.uk](http://www.cardiffcommitment.co.uk)  
[www.addewidcaerdydd.co.uk](http://www.addewidcaerdydd.co.uk)





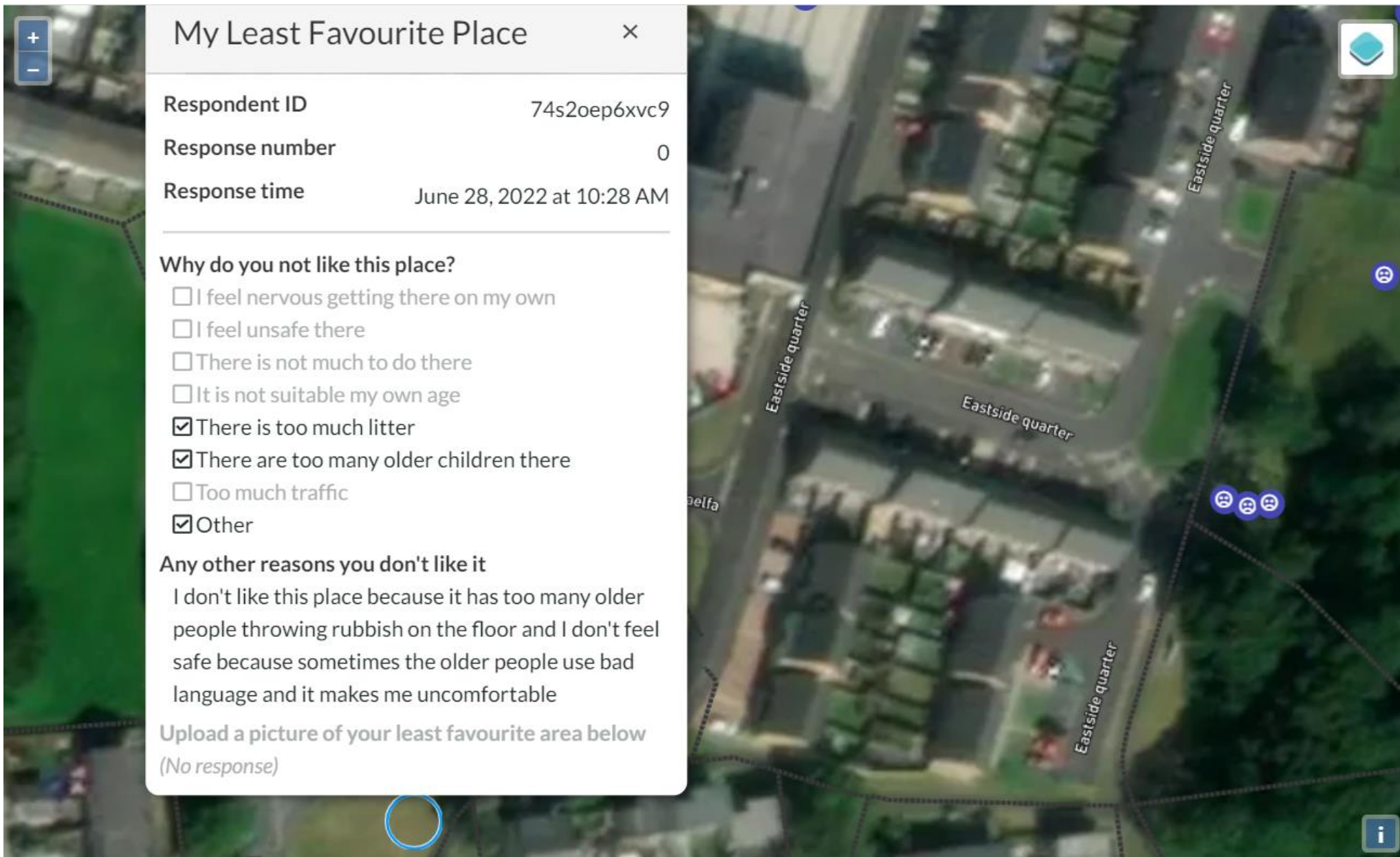


FOLLOW US / DILYNWCH NI



[www.cardiffcommitment.co.uk](http://www.cardiffcommitment.co.uk)  
[www.addewidcaerdydd.co.uk](http://www.addewidcaerdydd.co.uk)





## My Least Favourite Place ×

Respondent ID 74s2oep6xvc9  
 Response number 0  
 Response time June 28, 2022 at 10:28 AM

### Why do you not like this place?

- I feel nervous getting there on my own
- I feel unsafe there
- There is not much to do there
- It is not suitable my own age
- There is too much litter
- There are too many older children there
- Too much traffic
- Other

### Any other reasons you don't like it

I don't like this place because it has too many older people throwing rubbish on the floor and I don't feel safe because sometimes the older people use bad language and it makes me uncomfortable

Upload a picture of your least favourite area below

(No response)

FOLLOW US / DILYNWCH NI



[www.cardiffcommitment.co.uk](http://www.cardiffcommitment.co.uk)  
[www.addewidcaerdydd.co.uk](http://www.addewidcaerdydd.co.uk)





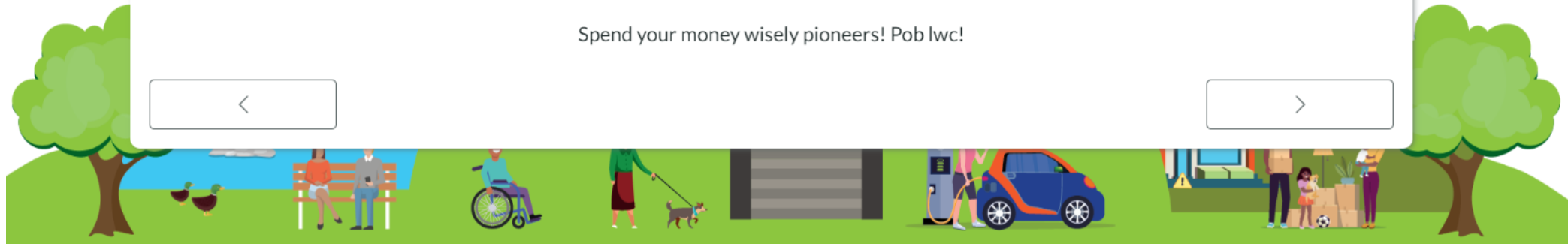


As Planning Pioneers, you have the ability to help change the future of our city!

In this section of Maptionnaire, a budget is allocated to you (this is what would happen if you were to have a career in planning one day).

You have the power to spend this budget in an exciting, yet realistic way in order to create an inspired local area for the future!

Spend your money wisely pioneers! Pob lwc!



FOLLOW US / DILYNWCH NI



[www.cardiffcommitment.co.uk](http://www.cardiffcommitment.co.uk)  
[www.addewidcaerdydd.co.uk](http://www.addewidcaerdydd.co.uk)



You have another £10,000 to spend on making other improvements in your local area. Think carefully about what your local area needs and remember to stay in budget!

£0 / £10000

0%

Trees (£400) 

Benches (£400) 


Paths (£1000) 

Bins (£200) 

Bus Stop (£2000) 

Wider Pavements (£4000) 

Allotments (£4000) 

No car zone (£6000) 



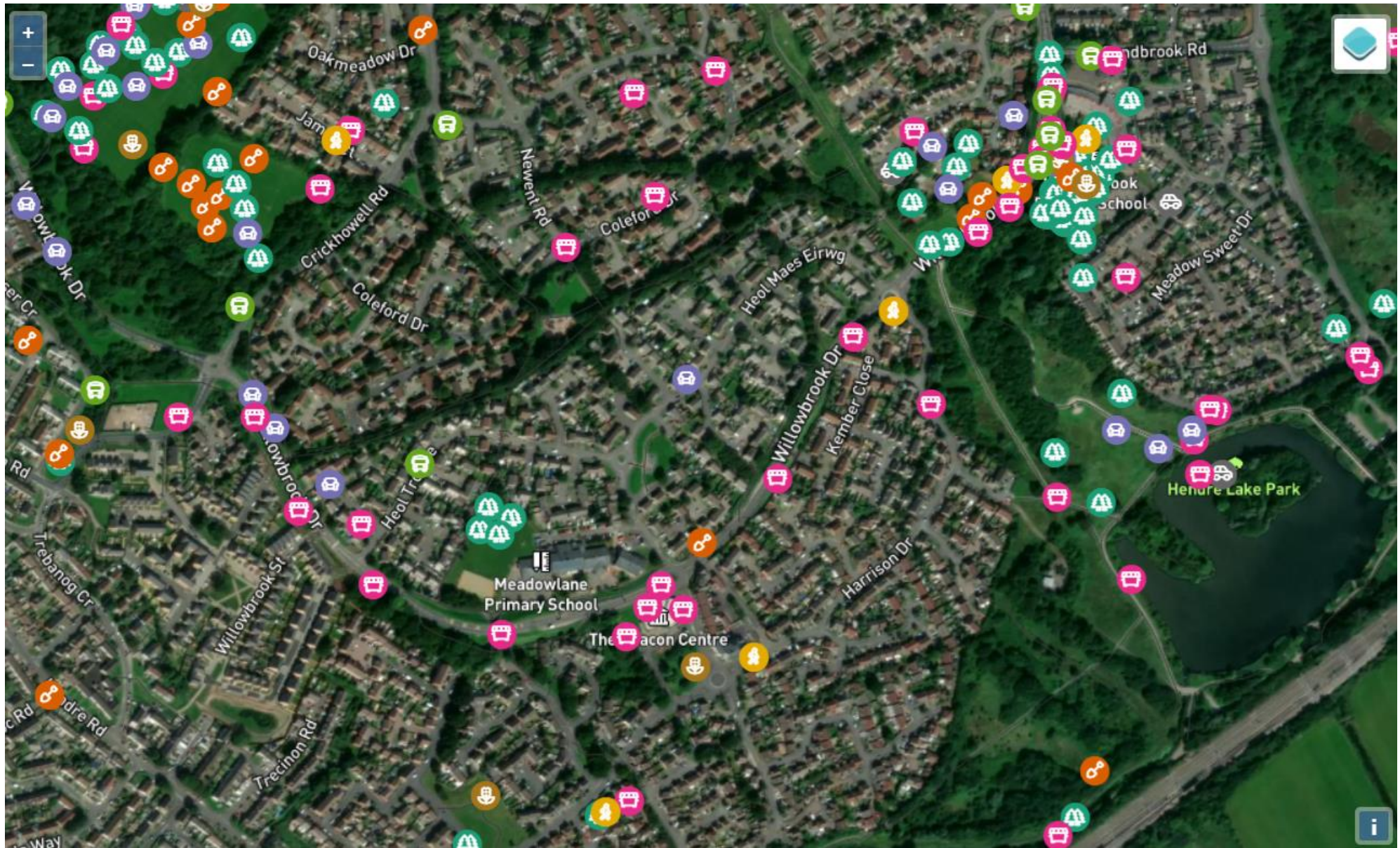
FOLLOW US / DILYNWCH NI



[www.cardiffcommitment.co.uk](http://www.cardiffcommitment.co.uk)  
[www.addewidcaerdydd.co.uk](http://www.addewidcaerdydd.co.uk)







FOLLOW US / DILYNWCH NI



[www.cardiffcommitment.co.uk](http://www.cardiffcommitment.co.uk)  
[www.addewidcaerdydd.co.uk](http://www.addewidcaerdydd.co.uk)

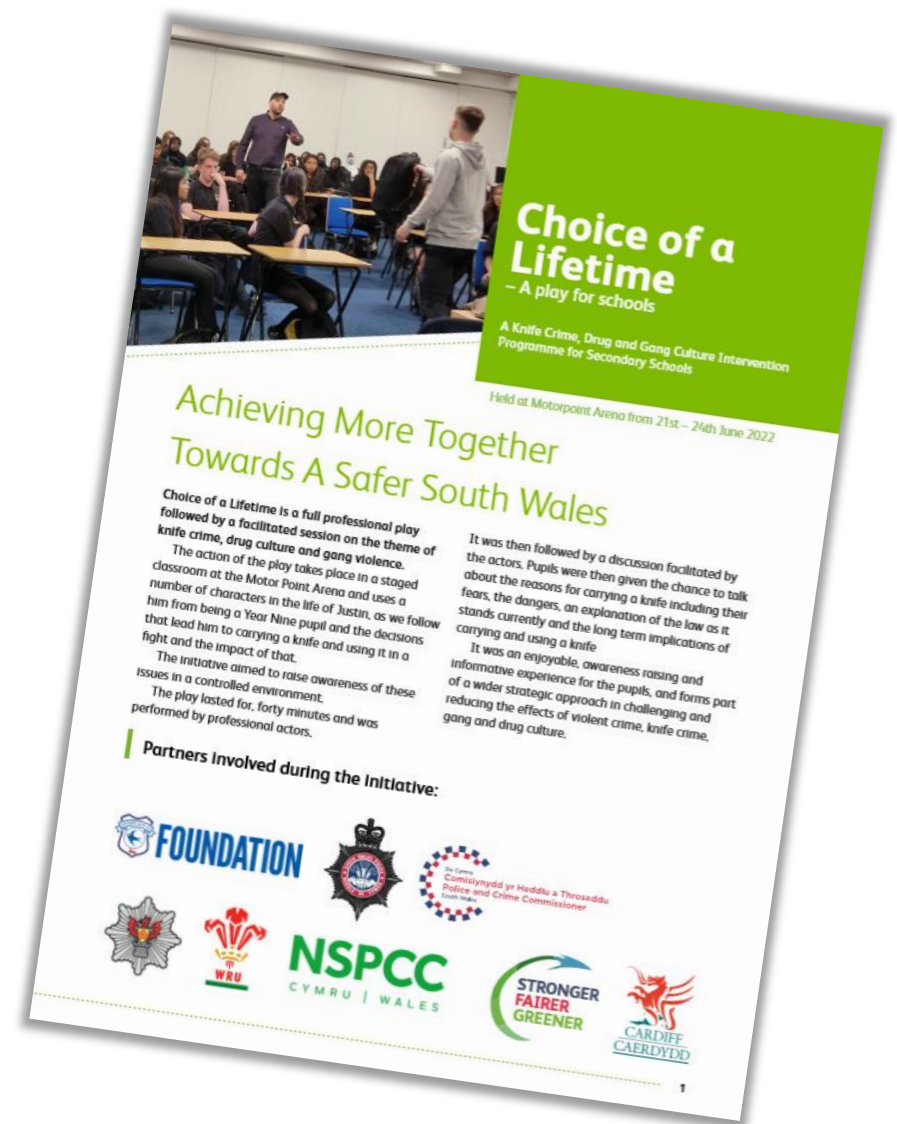






## Other projects:

- Knife crime project
- Immersive play
- Secondary school children
- Evaluated the impact of the play as well as questions relating to safety in Cardiff



FOLLOW US / DILYNWCH NI



[www.cardiffcommitment.co.uk](http://www.cardiffcommitment.co.uk)  
[www.addewidcaerdydd.co.uk](http://www.addewidcaerdydd.co.uk)



## Welcome

Thank you for coming to watch 'Choice of a Lifetime.'

Please complete the the following survey which is anonymous. Your answers are important as they will help to inform future knife crime initiatives.



powered by maptionnaire

FOLLOW US / DILYNWCH NI



[www.cardiffcommitment.co.uk](http://www.cardiffcommitment.co.uk)  
[www.addewidcaerdydd.co.uk](http://www.addewidcaerdydd.co.uk)



	True	False	Don't Know
You will only get a caution if you carry a knife but don't use it.	<input type="radio"/>	<input type="radio"/>	<input type="radio"/>
You are safer if you carry a knife.	<input type="radio"/>	<input type="radio"/>	<input type="radio"/>
You can't get arrested if the knife you are carrying isn't yours.	<input type="radio"/>	<input type="radio"/>	<input type="radio"/>
You can be sent to jail if someone is stabbed and you were with the offender.	<input type="radio"/>	<input type="radio"/>	<input type="radio"/>
Girls aren't involved in knife crime.	<input type="radio"/>	<input type="radio"/>	<input type="radio"/>
Knife crime only affects young people connected with crime.	<input type="radio"/>	<input type="radio"/>	<input type="radio"/>
During a knife amnesty, people can hand in their knives	<input type="radio"/>	<input type="radio"/>	<input type="radio"/>


< >

powered by maptionnaire



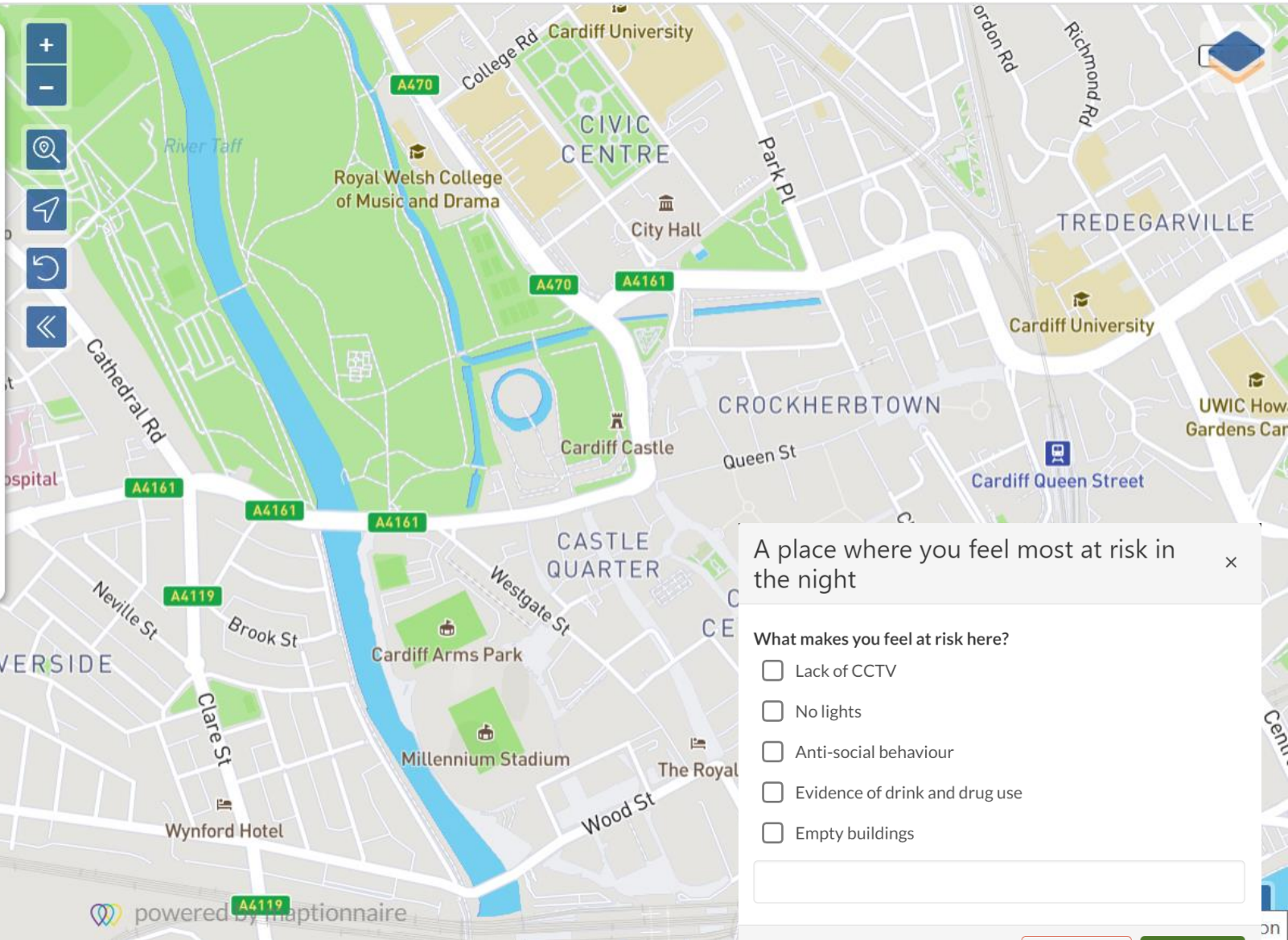
Think carefully about Cardiff City Centre. Is there anywhere you avoid or makes you feel at risk.

Press the blue button and drop a pin on the map to show:

A place where you feel most at risk in the day 

A place where you feel most at risk in the night 

I don't feel at risk anywhere in Cardiff City Centre.



A place where you feel most at risk in the night ✕

What makes you feel at risk here?

- Lack of CCTV
- No lights
- Anti-social behaviour
- Evidence of drink and drug use
- Empty buildings

Delete 

Done 

FOLLOW US / DILYNWCH NI



[www.cardiffcommitment.co.uk](http://www.cardiffcommitment.co.uk)  
[www.addewidcaerdydd.co.uk](http://www.addewidcaerdydd.co.uk)





## Impact:

- Results were analysed and reports written by the Resources, Performance and Partnerships team.
- This was then shared with the Head of Planning as well as other senior planners.
- This information is being feedback to Councillors.
- Currently, we are working on ensuring that the interactive data can be accessed by those that need it. This can then be used to influence decision making.
- Selected to be used as a case study for the Co-operative Councils Innovation Network (CCIN).
- Used for Choice of a Lifetime 2023 – all secondary schools in Cardiff.
- Additional projects with other departments in CCC are currently being developed, e.g. One Planet and Passport to the City.

FOLLOW US / DILYNWCH NI



[www.cardiffcommitment.co.uk](http://www.cardiffcommitment.co.uk)  
[www.addewidcaerdydd.co.uk](http://www.addewidcaerdydd.co.uk)

