

# Cybercrime: the Police Response

---

Andrew Gould

Detective Chief Superintendent

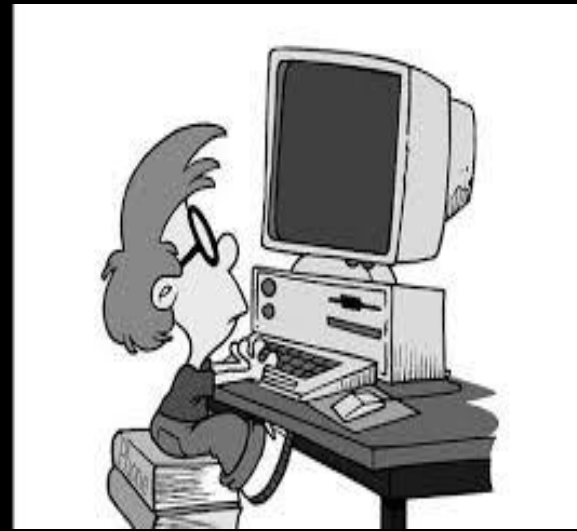
National Cybercrime Programme Lead

4<sup>th</sup> October 2022

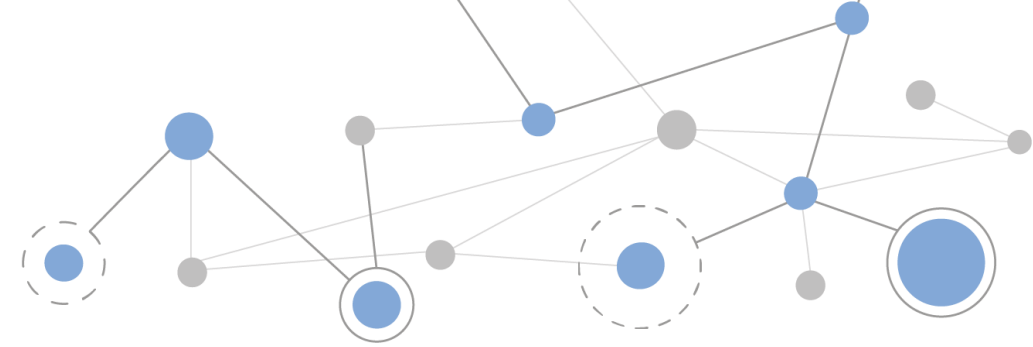


National  
Cybercrime  
Programme









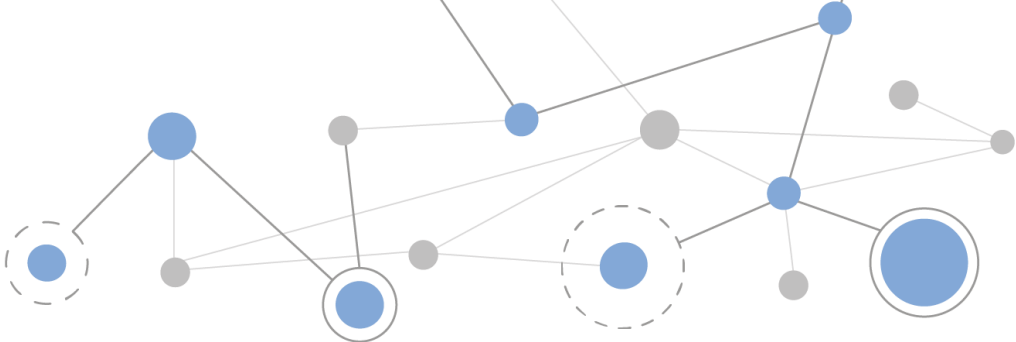
National Cyber  
Security Centre  
a part of GCHQ



**NCA**

National Crime Agency

# Force & ROCU Cyber Crime Units



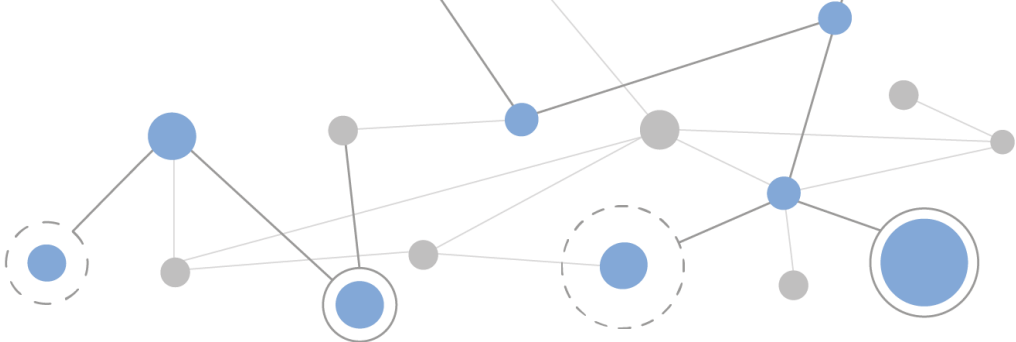
Cyber PURSUE

Cyber PREPARE

Cyber & Digital  
Specials & Volunteers

Cyber PROTECT

Cyber PREVENT



# POLICE

## CYBERALARM

Cloud Systems

The Internet

Reports

Details of suspicious activity and known vulnerabilities sent to Member Organisations

### Sample Firewall Log

```
date=2020-01-07 time=13:25:27 timezone="GMT" device_name="CR500ia" device_id= C070123456-ABCDEF log_id=010102600002 log_type="Firewall" log_component="Firewall Rule" log_subtype="Denied" status="Deny"
priority=Information fw_rule_id=3 ips_policy_id=0 appfilter_policy_id=0 in_interface="PortG.16" out_interface="PortB" src_mac=00:0d:48:0a:05:45
src_ip=172.16.16.95 src_country_code="GB" dst_ip=192.168.5.2 protocol="UDP" src_port=42288 dst_port=53 sent_pkts=0 rcv_pkts=0 sent_bytes=0 rcv_bytes=0
```

### Sample Spam Log

```
datetime=2017-05-26T19:36:48+0100|aCode=BY81J52RPjSmp7MrubnlZg|acc=C0A0|AttSize=1267|Act=Acc|AttCnt=2|AttNames=\\filename.docx",
"filename2.xlsx")|MsgSize=2116|MsgId=messageId@mssageId
```

Web Applications

Websites, SharePoint, Dropbox, etc

Police CyberAlarm Collector

Receives logs from the Member Organisation

Data logs of suspicious activity pass through an encrypted one-way flow to the Police CyberAlarm server



National  
Cybercrime  
Programme

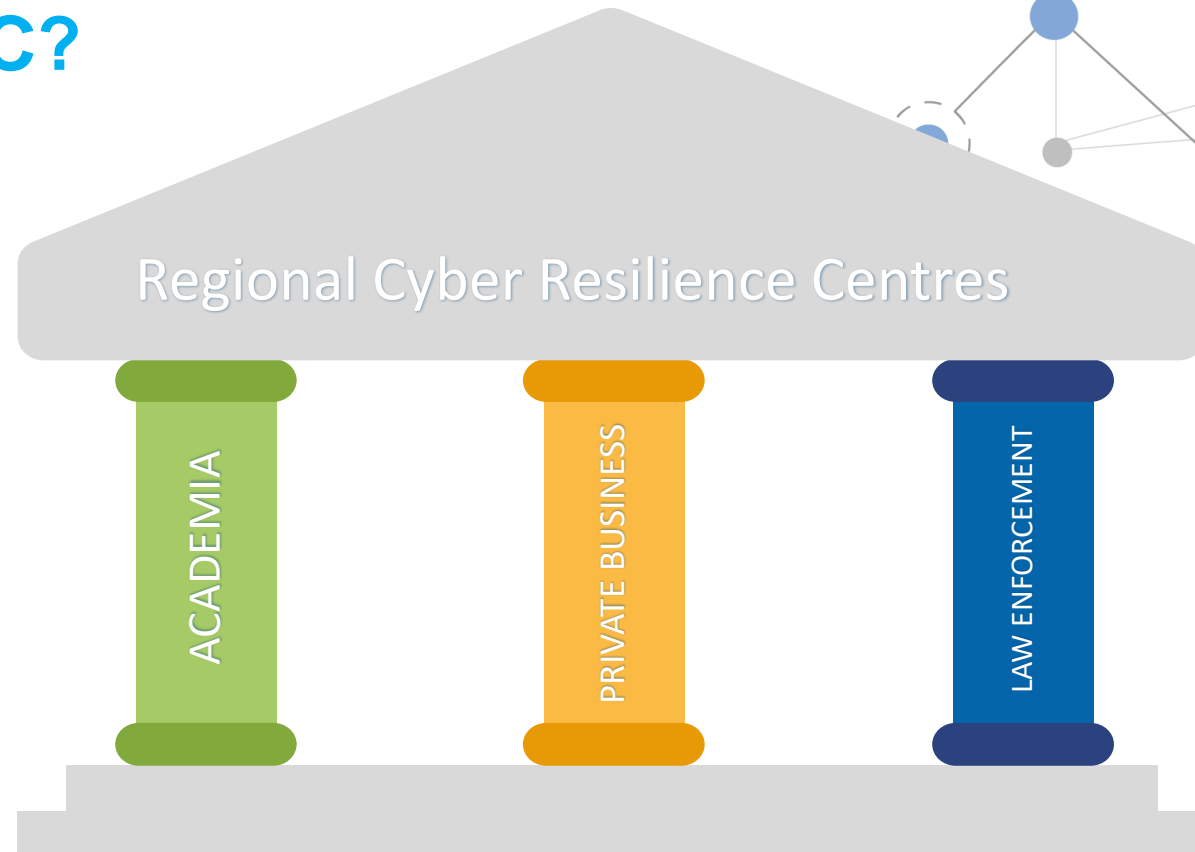


THE  
CYBER  
RESILIENCE  
CENTRE

---

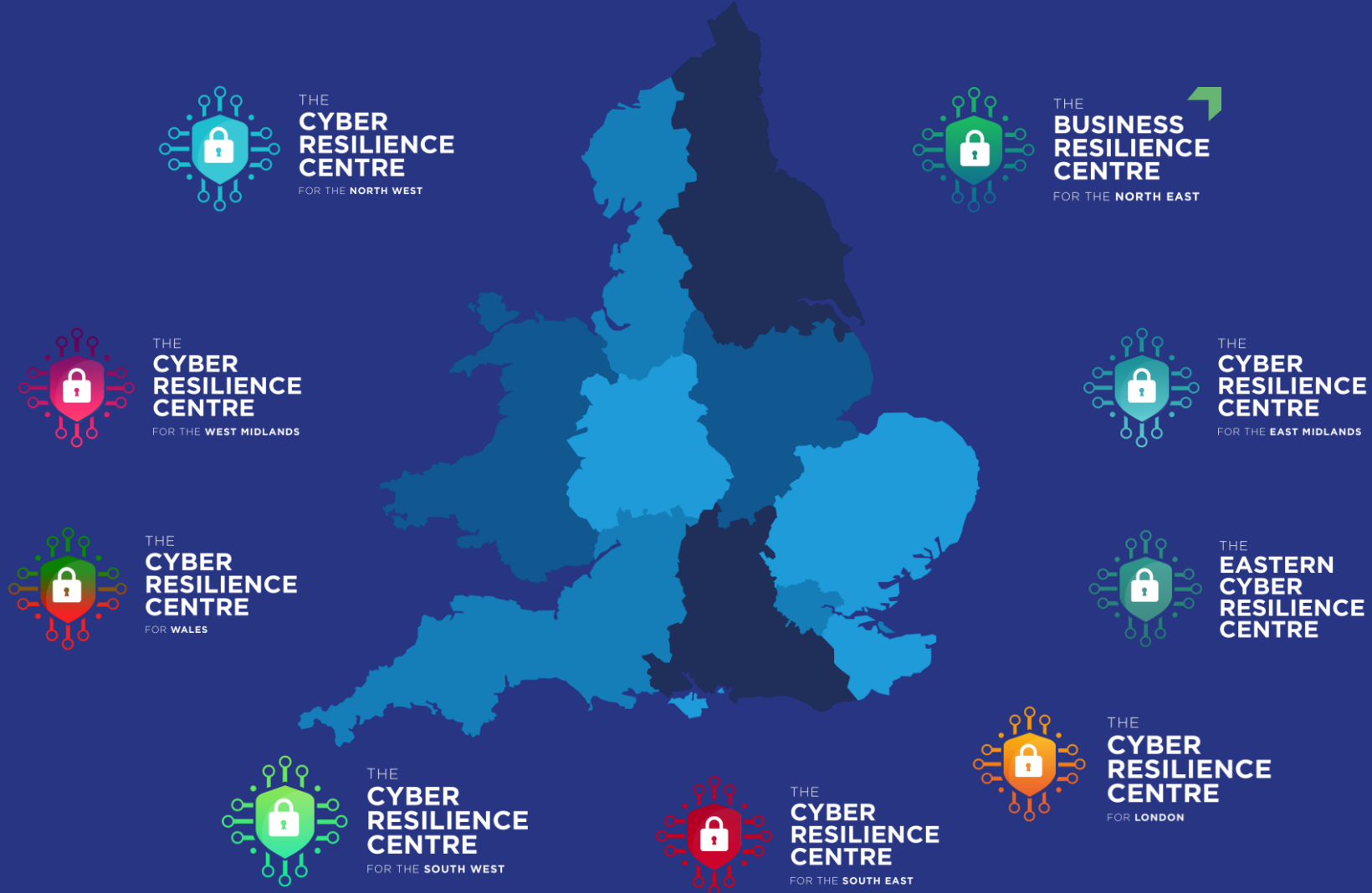


# What is a CRC?



## Trust and Confidence

# Regional CRC network



## Founding National Ambassadors



NatWest  
Group



THE VERY GROUP



Chainalysis

accenture

## In advanced discussion with:

Microsoft, Lockheed Martin, Haleon, PA Consulting, Jacobs, Whitbread, BDO, EY, Mastercard, Amazon, Royal London

