

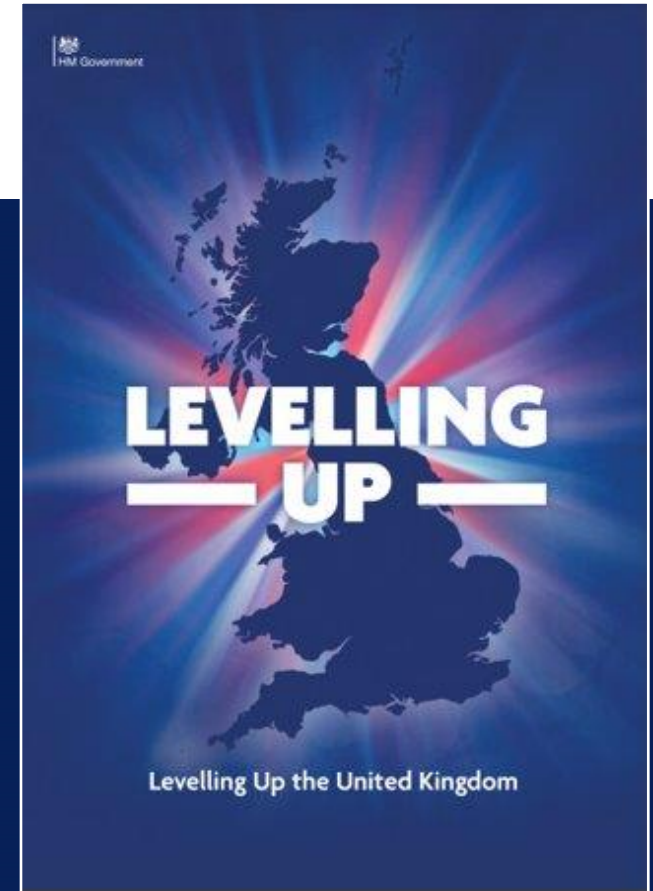


Department for Levelling Up,
Housing & Communities

Spatial data to support local delivery

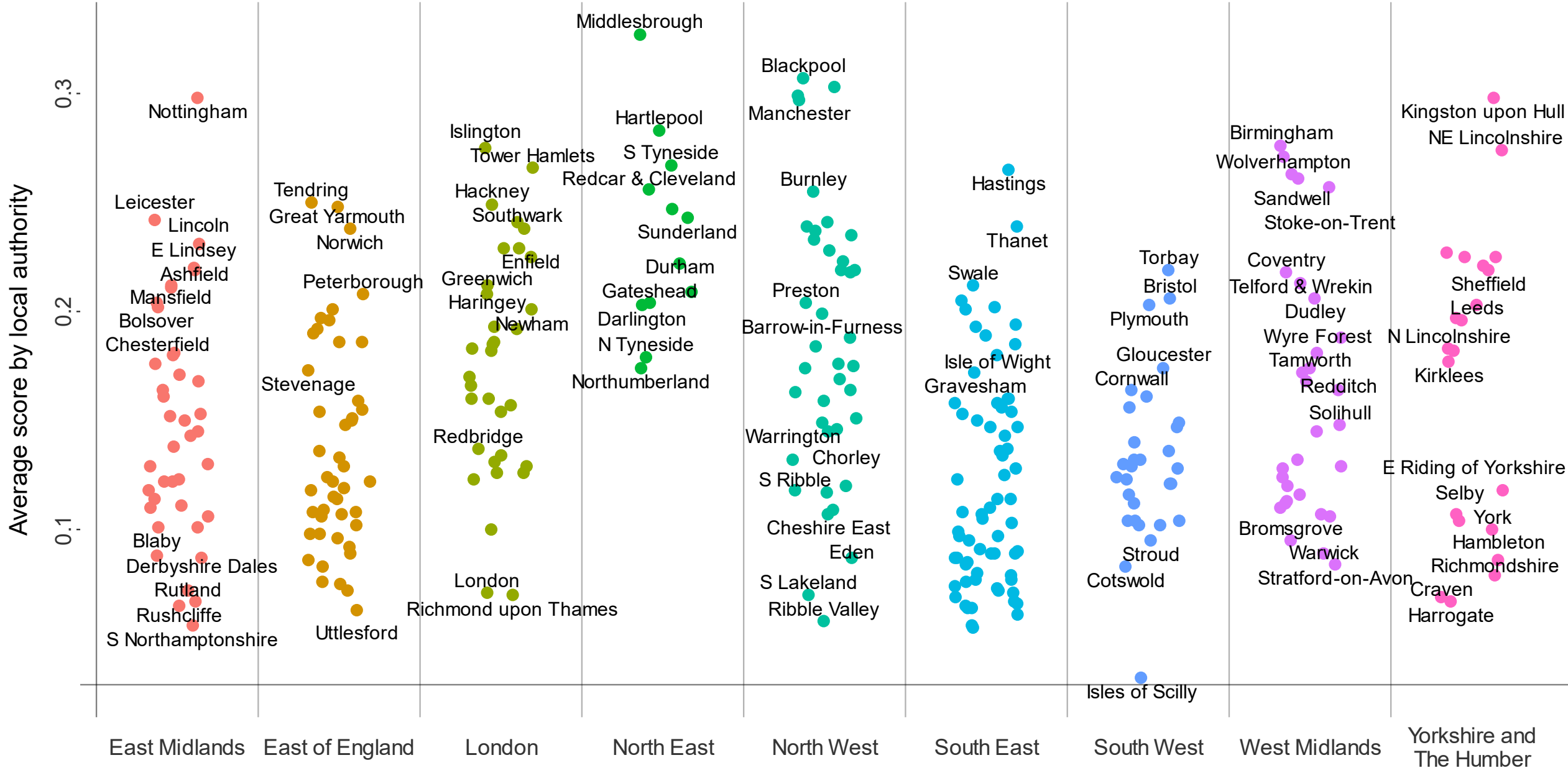
Tom Smith
Director SDU, Chief Data Officer, DLUHC

20 October 2023



Income Deprivation Affecting Children Index (IDACI) - Average score by local authority

Indices of Deprivation 2019





“

DLUHC will establish a new Spatial Data Unit to drive forward the data transformation required in central government

”



What the Spatial Data Unit works on

Address data gaps, create new data, improve the use of data & strengthen national statistics to **enable data-driven decision-making & greater transparency**

Better data

Place-based insights

Generate spatial insights to support DLUHC's **focus on placed-based working**

Ensure SDU and DLUHC has the skills, infrastructure, tools & strategy to be a **data leader across government**

Data capability

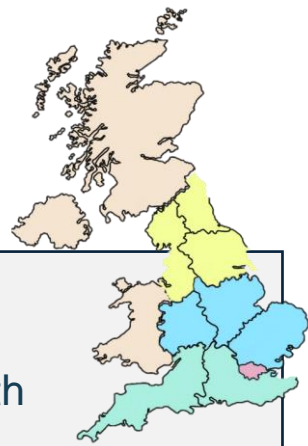
Data science support

Test and adopt **innovative support for LU missions** and provide rapid spatial insight, visualisation and modelling



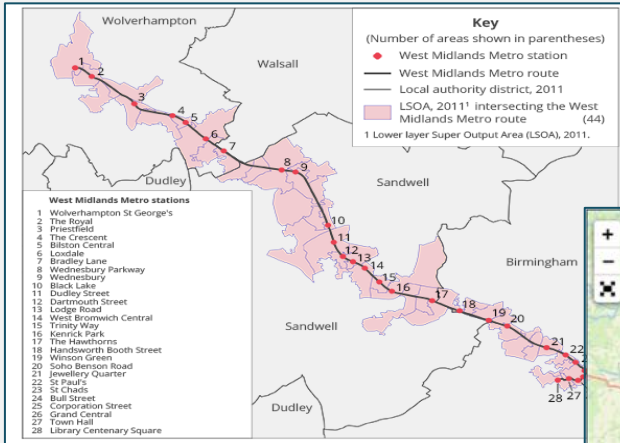
Levelling up subnational data and analysis support

Partnership with ONS

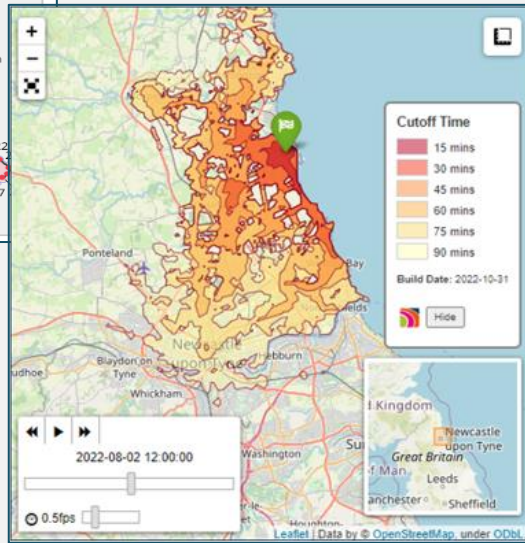


Better local economic & social data

Gross Value Added (GVA) to LSOA



Transport Connectivity



ONS Local

An analytical advisory service for local leaders, with dedicated analysts based across the UK

Analytical

Providing analytical advice, supporting projects, and collecting user priorities to inform ONS analysis plans

Data

Supporting users to navigate the data landscape, access data platforms and connecting to expert advice at ONS for specific data sets

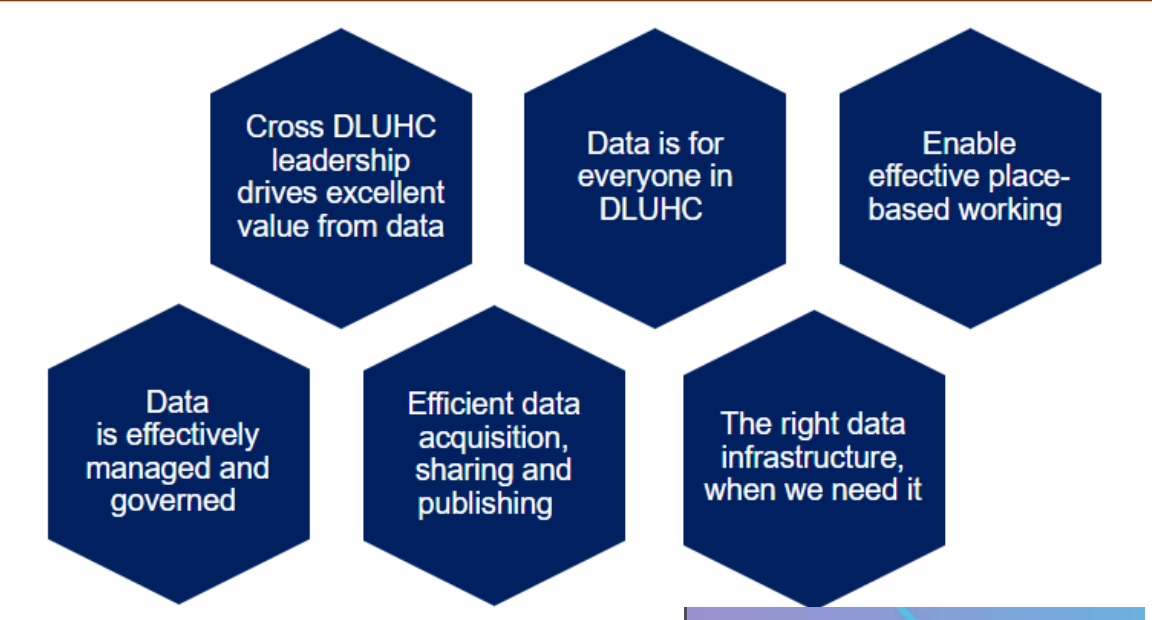
Network

Hosting regular events based on analytical themes, sharing knowledge and presence within existing networks and using our political/analytical knowledge to facilitate policy making



Data capability > Building skills & capability for DLUHC & local partners

Data strategy



Supporting deeper devolution - Trailblazers

GOV.UK

[Home](#) > [Business and industry](#) > [UK economy](#) > [City deals and growth deals](#)

Policy paper

West Midlands Combined Authority: “Trailblazer” deeper devolution deal

“Trailblazer” deeper devolution deal, agreed between the West Midlands Combined Authority and the UK government.

Press release

Trailblazing devolution deal signed giving Greater Manchester more control over transport, skills and housing

The Levelling Up Secretary and Mayor Andy Burnham have signed a landmark deeper devolution deal for Greater Manchester putting more cash and power in the hands of local leaders.

Levelling Up Partnerships

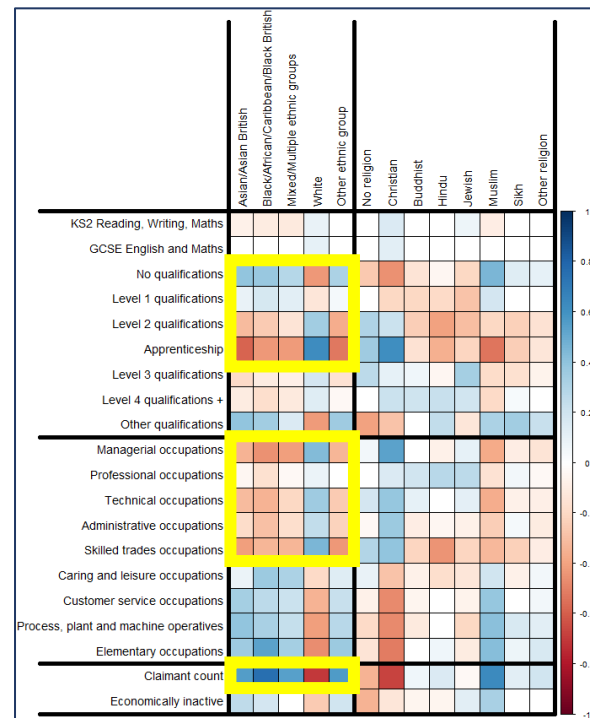
Levelling Up Partnerships will provide bespoke **place-based regeneration in 20 places across England** over the next two years

Analytical data packs underpin targeted policy interventions in each place, combining national data insight with local expertise

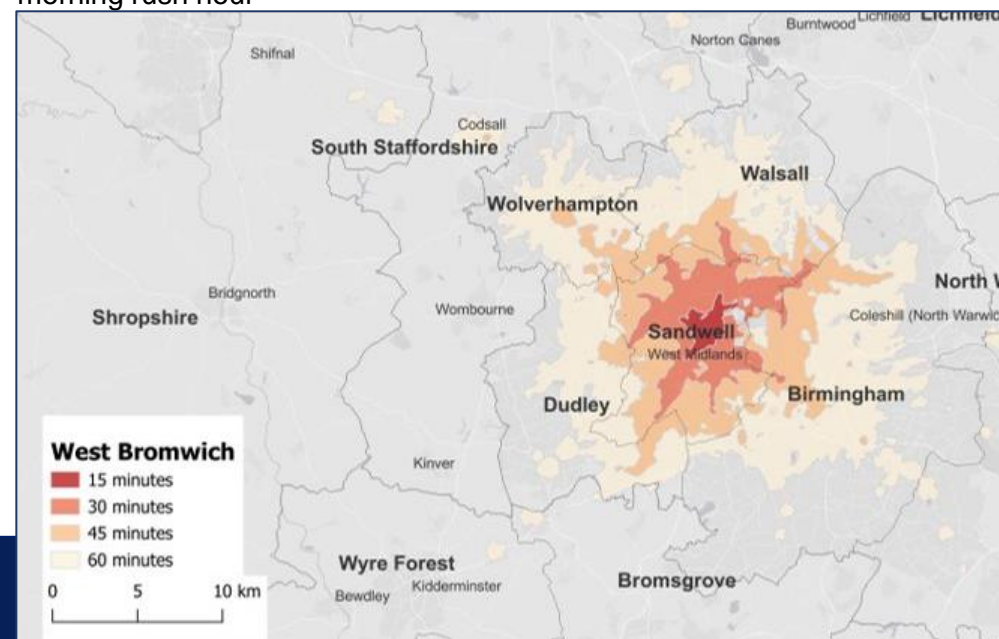
Working closely with policy teams and local stakeholders to ensure **learnings are reflected in policy development**

Data packs used in discussions and **engagements with local authorities, stakeholders, ministers and MPs**

Correlation matrix of KS2 and KS4 education, skills, ethnicity, religion, industry, claimant count and economic activity LSOAs in West Midlands (Census 2021)



Public transport accessibility by journey time from West Bromwich high street during morning rush hour



Press release

Levelling up investment unlocks £300 million Blackpool regeneration

Government funding will unlock project while creating a new state-of-the-art court in Blackpool

Press release

New regeneration plans announced to level up Hull and Sandwell

Sandwell and Hull the first areas to benefit from new major bespoke regeneration project.

From: [Department for Levelling Up, Housing and Communities](#) and [The Rt Hon Michael Gove MP](#)

Published 28 September 2023

Last updated 28 September 2023 — [See all updates](#)

Department for Levelling Up, Housing & Communities

Sandwell – Analytical Snapshot

September 2023



LEVELLING UP



Department for Levelling Up,
Housing & Communities

Spatial data to support local delivery

Tom Smith
Director SDU, Chief Data Officer, DLUHC

20 October 2023

