



Supporting London's
Smart City Journey

 **LOTI_LDN**

 **Loti.london**



#LOTI

Loti.London

LOTI's mission is to ensure London local government has a truly 21st century toolkit to tackle its biggest challenges.



LOTI Approach to Smart Cities



loti

London's Smart City Ecosystem

SHIFT



Testbed for Smart City and urban innovation in the Olympic Park

DG Cities: Greenwich



Mobility and Energy trials

Borough initiatives



Building a data platform for smart city data and trialing air quality use cases.

South London Partnership



Use case deployment capability at scale



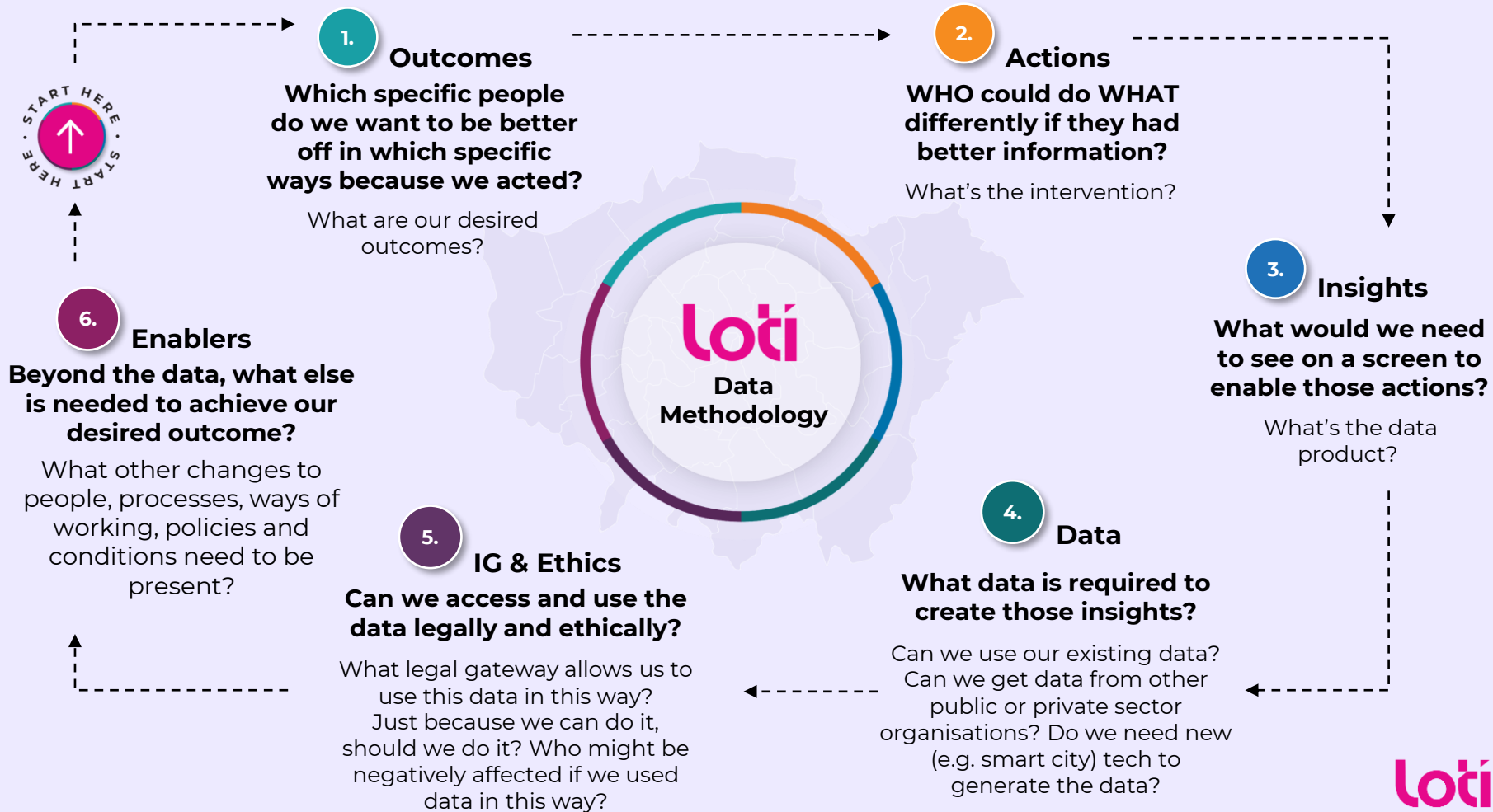
Testing and prototyping

Deployment at scale



Smart City projects should...

- 1 - Be driven by achieving outcomes that meet the needs of citizens, not the desire to use a specific technology.
- 2 - Be conducted openly, transparently and ethically.
- 3 - Enable collaboration between different boroughs, systems and service providers.
- 4 - Be secure by design.
- 5 - Recognise that technology and data alone are rarely the whole solution.



LOTI Recommendations for Local Government Data Ethics Capabilities



Principles & Values

First steps

1. Adopt five universal principles: Transparency; Accountability; Privacy; Fairness; and Safety.
2. Incorporate data ethics into a formal policy or data strategy that meaningfully informs the design of data project.

Low Maturity

Medium Maturity

High Maturity

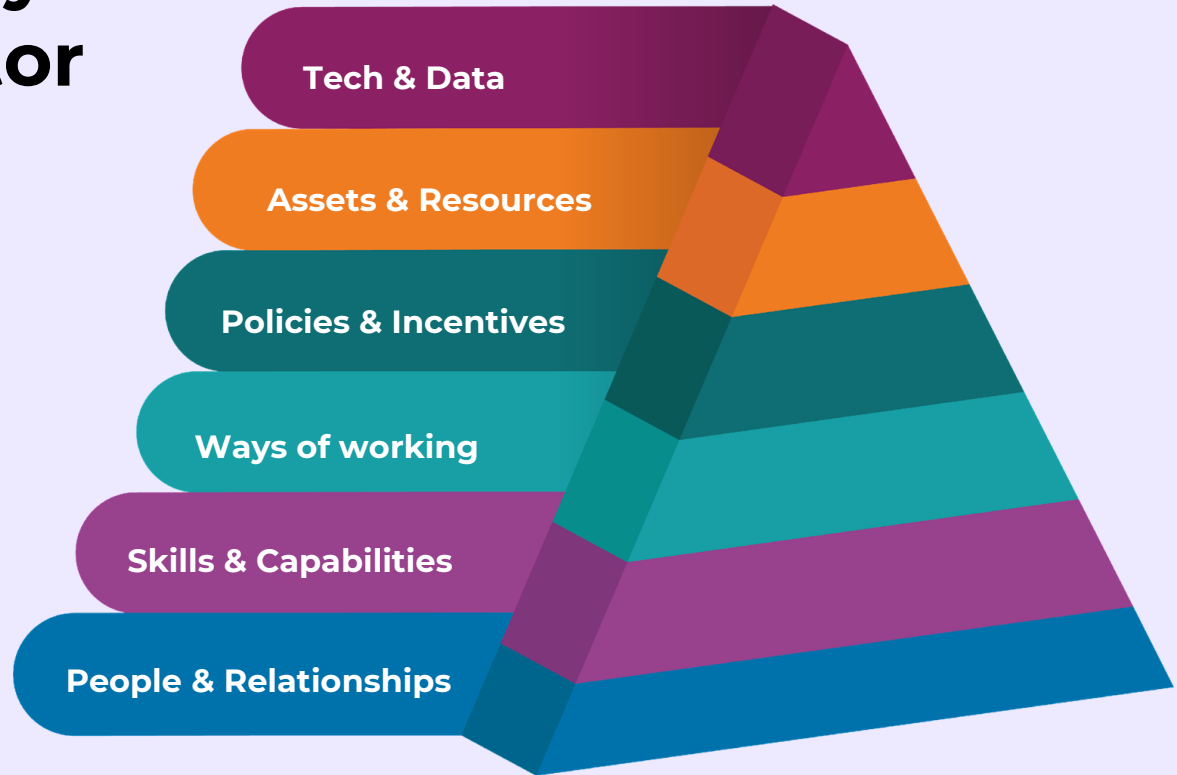
Resident Engagement	Governance & Processes	Skills & Culture
<ol style="list-style-type: none"> 3. Share details of data use publicly and in appropriate language. 4. Proactively inform residents when they are subject to complex data processes. 	<ol style="list-style-type: none"> 7. Create a data ethics process flow for data projects. 8. Test and implement the appropriate tools for doing data ethics. 9. Share ethics assessments and evaluations of data projects to establish ethics standards across London. 	<ol style="list-style-type: none"> 13. Data Ethics Training and Learning and Upskilling. 14. Develop an ongoing organisational dialogue and culture around ethics.
<ol style="list-style-type: none"> 5. Engage residents around their values and expectations to establish guidance and policies for untested, advanced, or publicly divisive data uses. 	<ol style="list-style-type: none"> 10. Establish a data ethics board. 	<ol style="list-style-type: none"> 15. Include responsibility for data ethics in job descriptions.
<ol style="list-style-type: none"> 6. Develop the data (ethics) literacy of residents. 	<ol style="list-style-type: none"> 11. Create a simple appeal services for residents to challenge data-related decisions. 12. Ensure suppliers meet data ethics principles and transparency standards. 	<ol style="list-style-type: none"> 16. Hire a dedicated data ethicist.

Who wants 33 smart cities?



If “**smart city**” is to mean anything at all, it’s about **how smart we are** in using all the tools and methods at our disposal to **achieve outcomes that matter to Londoners.**

LOTI hierarchy of public sector innovation



Smart City Projects: Net Zero

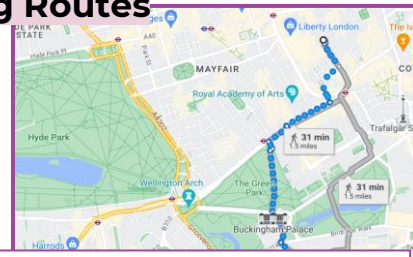
LOTI's deep interest is in the potential for smart city approaches to support London's climate goals

EV charge Point Dashboard



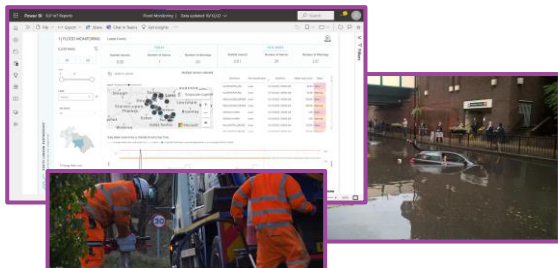
Informing strategic deployment of new charging infrastructure

Westminster: Air Quality Walking Routes



Clean air wayfinding using multiple air quality sensor networks

SLP: Flood Prevention



Monitoring gullies to enable proactive flood prevention work

SLP: School Air Quality Monitoring



Demonstrating the impact of school streets interventions on local air quality

SLP: Building Energy Performance



Understanding the thermal performance of building to guide retrofit prioritisation



Questions?



loti