

What are digital workers?

Software robots designed to help your teams
do more and achieve more



Goals of Intelligent Automation?

Driving collaboration across the Health &
Social Sector to..

- **Increase efficiency and productivity**
- **Improve staff morale and employee engagement**
- **Enhance Patient & citizen outcomes**

“Up to 80% of Social Care time is taken up with administrative tasks”

The demand is growing but there is less time available for social work practitioners to support vulnerable people.

— Assistant Director, Adult Social Care

A New World of Integrated Care Systems

Ensuring all healthcare stakeholders are enabled to communicate and collaborate effectively across disciplines and organizations is central to the future of healthcare

Blue Prism gives those stakeholders the ability to bridge the systems gap while creating a centralized operating system and enabling full transparency



STANDARDISE
AUTOMATION



SHARE
EXPERTISE



CREATE A
SINGLE C.O.E



PROCESS
AGGREGATION
& MODELLING



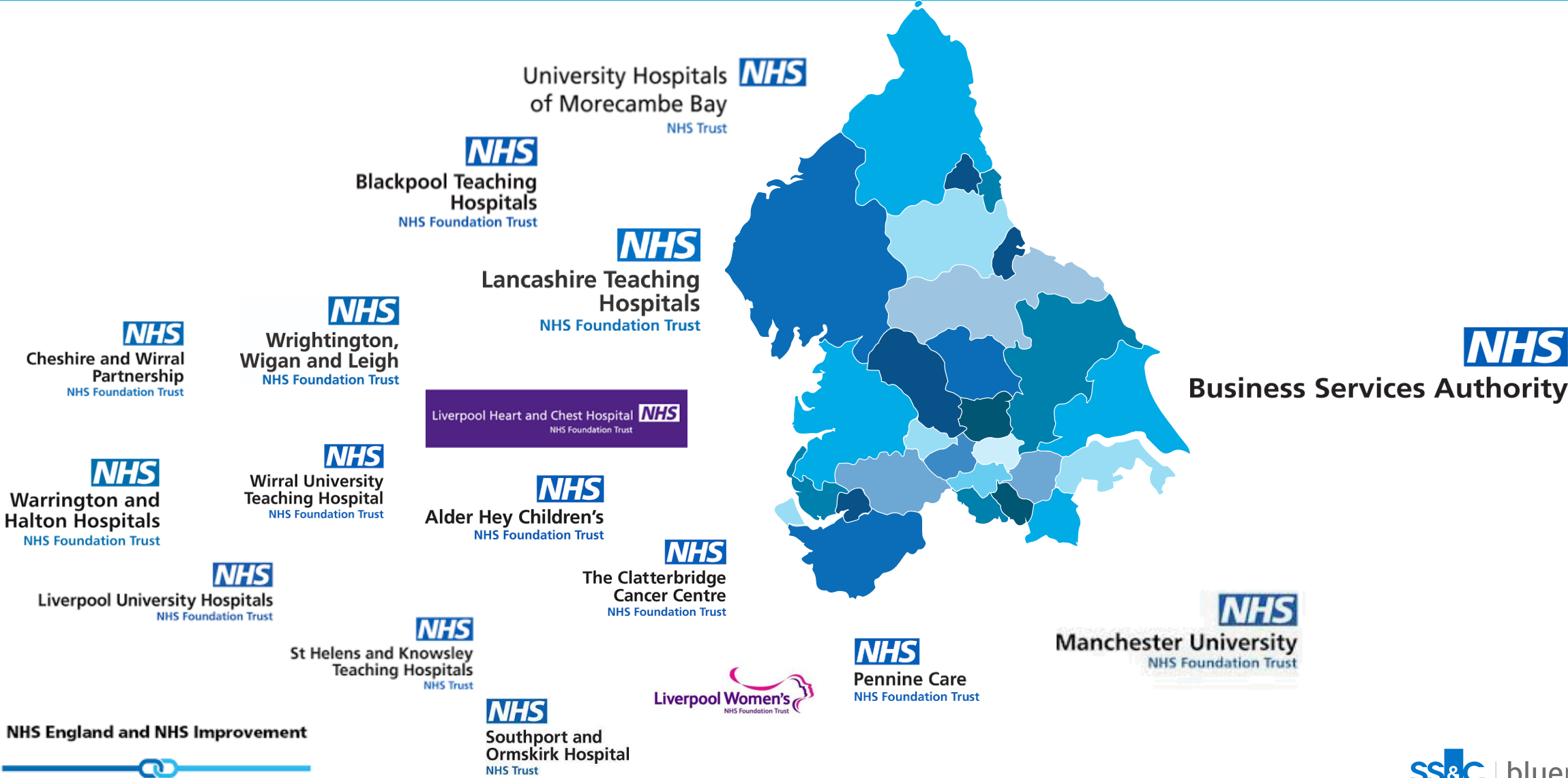
FINANCIAL & OPERATIONAL
EFFICIENCY

Our NHS Customer Base

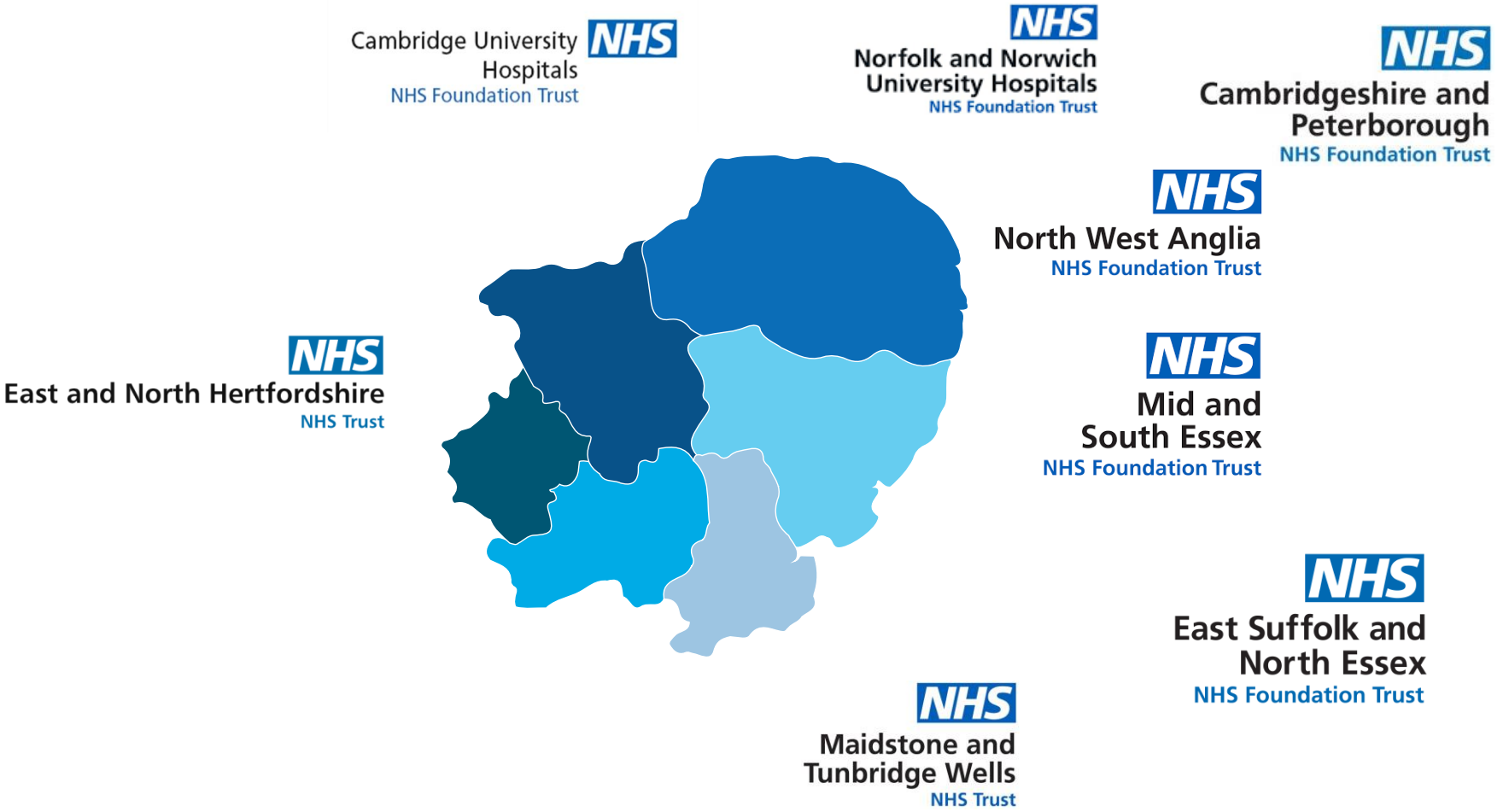
This image displays a wide variety of NHS organizations, including trusts, foundation trusts, and clinical commissioning groups. The logos are arranged in a grid-like pattern, with some larger and more prominent than others. The organizations listed include:

- Salisbury NHS Foundation Trust
- North Bristol NHS Trust
- North West Anlgia NHS Foundation Trust
- Rotherham Clinical Commissioning Group
- Doncaster Clinical Commissioning Group
- Croydon Health Services NHS Trust
- St Helens and Knowsley Teaching Hospitals NHS Trust
- Bath and North East Somerset, Swindon and Wiltshire Clinical Commissioning Group
- King's College Hospital NHS Foundation Trust
- Nottingham University Hospitals NHS Trust
- The Leeds Teaching Hospitals NHS Trust
- Liverpool Women's NHS Foundation Trust
- Liverpool Heart and Chest Hospital NHS Foundation Trust
- Liverpool University Hospitals NHS Foundation Trust
- Cheshire and Wirral Partnership NHS Foundation Trust
- Birmingham Community Healthcare NHS Trust
- London North West University Healthcare NHS Trust
- United Lincolnshire Hospitals NHS Trust
- Chelsea and Westminster Hospital NHS Foundation Trust
- Business Services Authority
- Cambridgeshire and Peterborough NHS Foundation Trust
- Sheffield Teaching Hospitals NHS Foundation Trust
- University College London Hospitals NHS Foundation Trust
- Wirral University Teaching Hospital NHS Trust
- Barts Health NHS Trust
- Royal Surrey NHS Foundation Trust
- Alder Hey Children's NHS Foundation Trust
- Norfolk and Norwich University Hospitals NHS Foundation Trust
- County Durham and Darlington NHS Foundation Trust
- East Sussex Healthcare NHS Trust
- Bristol NHS Trust
- Solent NHS Trust
- Royal Brompton & Harefield NHS Foundation Trust
- Moorfields Eye Hospital NHS Foundation Trust
- Somerset Partnership NHS Foundation Trust
- Guy's and St Thomas' NHS Foundation Trust
- Cambridge University Hospitals NHS Foundation Trust
- North Middlesex University Hospital NHS Trust
- Tees, Esk and Wear Valleys NHS Foundation Trust
- The Hillingdon Hospitals NHS Foundation Trust
- Guy's and St Thomas' NHS Foundation Trust
- Kettering General Hospital NHS Foundation Trust
- Care Quality Commission
- Maidstone and Tunbridge Wells NHS Trust
- Great Ormond Street Hospital for Children NHS Foundation Trust
- University Hospitals Coventry and Warwickshire NHS Trust
- Royal Free London NHS Foundation Trust
- Royal Cornwall Hospitals NHS Trust
- University Hospitals Bristol and Weston NHS Foundation Trust
- Great Western Hospitals NHS Foundation Trust
- North Cumbria Integrated Care NHS Foundation Trust
- Walsall Healthcare NHS Trust
- University Hospitals of Morecambe Bay NHS Trust
- Lincolnshire Community Health Services NHS Trust
- University Hospitals Birmingham NHS Foundation Trust
- The ROYAL MARSDEN NHS Foundation Trust
- South London and Maudsley NHS Foundation Trust
- County Durham and Darlington NHS Foundation Trust
- Wrightington, Wigan and Leigh NHS Foundation Trust
- East Suffolk and North Essex NHS Foundation Trust
- University Hospitals of Derby and Burton NHS Foundation Trust
- Hounslow and Richmond Community Healthcare NHS Trust
- Imperial College Healthcare NHS Trust
- East and North Hertfordshire NHS Trust
- Gateshead Health NHS Foundation Trust
- Dorset Clinical Commissioning Group
- The Clatterbridge Cancer Centre NHS Foundation Trust
- University Hospitals of Derby and Burton NHS Foundation Trust
- Warrington and Halton Hospitals NHS Foundation Trust
- Barking, Havering and Redbridge University Hospitals NHS Trust
- The Royal Wolverhampton NHS Trust
- MHRA
- Essex Partnership University NHS Foundation Trust
- Manchester University NHS Foundation Trust
- University Hospitals of North Midlands NHS Trust
- Connect Health
- Lancashire Teaching Hospitals NHS Foundation Trust
- Southport and Ormskirk Hospital NHS Trust
- Calderdale and Huddersfield NHS Foundation Trust
- Blackpool Teaching Hospitals NHS Foundation Trust
- University Hospitals of North Midlands NHS Trust
- South Eastern Health and Social Care Trust
- Lewisham and Greenwich NHS Trust
- Royal United Hospitals Bath NHS Foundation Trust
- South Tees Hospitals NHS Foundation Trust
- NEL
- Pennine Care NHS Foundation Trust
- HSC
- East Midlands Ambulance Service NHS Trust
- North East Ambulance Service NHS Foundation Trust
- North West Ambulance Service NHS Trust
- Yorkshire Ambulance Service NHS Trust
- modality Partnership
- Stafford & Surrounds CCG
- SS&C | blueprism
- GIG CYMRU NHS WALES logos and associated Welsh text.
- Sirona care & health logo.

Blue Prism NHS Customers – North West Region



Blue Prism NHS Customers – East of England Region

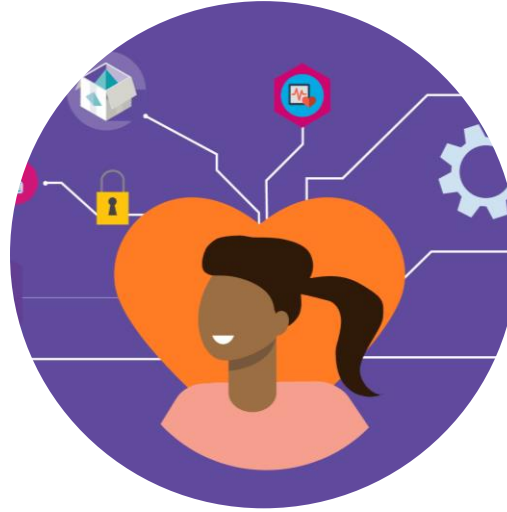


How Could A Digital Workforce Support you?



Workforce Capacity

- Giving time back to existing workforce
- Providing additional capacity to staffing levels
- Streamlining recruitment and onboarding processes



ICS Consolidation

- Validating and streamlining existing processes
- Centralising and standardising processes to ensure consistency throughout care services



Elective Recovery

- Prioritising waiting lists
- Reducing wait times for appointments and further care
- Streamlining patient communication

Alder Hey Children's Hospital



The Problem

Alder Hey had 6400 patients with historic open referrals in their Meditech PAS. The team needed to contact each patient to find out whether they were happy to be discharged or still needed to come to the hospital for treatment. They needed the most up to date demographic information so that they can contact them to ask.



The Solution

Alder Hey built an automation so their Digital Workers downloaded and collated the latest demographic and GP information from the Spine and created a report to send to the validation team.



The Benefits

On average a member of the validation team went through 45 patients a day. The digital workers did this in 5 days which saved 143 days of the teams time and improved data quality.

Next steps are to create an automation to record the outcome when they've contacted the patients.

PATHOLOGY

COVID Serology (Antibody) Testing



The Problem

- The UK Government set a directive to all NHS Trusts to conduct staff antibody testing within less than a week, to support a drive for national testing of NHS employees.



The Solution

- The bot received an incoming staff test request, verified incoming data and registered the serology test in Sunquest ICE. On a daily basis the bot would check patient results and send the results to staff.



The Benefits

- More than 20,000 tests were processed taking 23 seconds per test
- Over 2,100 admin hours saved
- Expanded beyond the Acute to include Primary Care, Social Care, Emergency Services and Military personnel
- Solution re-purposed and deployed to Norfolk & Norwich Hospital and University Hospitals Morecambe Bay using the NHS Digital Exchange (DX)

How are digital workers helping get the health service back on track?

1.8m

hours saved

For the NHS in the last year by automating key processes

1 million

Vaccine updates

Migrated to the clinical workstation, so nurses and doctors can validate records and manage risk of incoming patients

2 mins

Reduced from 4 days

Reporting test results from secondary to primary care providers, allowing GPs to issue oximetry monitors to high risk patients

£1m

Saved in 18 months

With ROI being achieved within the first 2 months



ICS collaboration

Ability to scale quicker

Share processes and resources between the ICS



Shared pool of resource

Digital workers moving between ICS to meet demand



Economies of scale

Aggregated cost model reduces cost and increases TCO



Shared resources

Regional center of excellence (CoE) to promote talent regionally



Clinical time and capacity released

THANK YOU!

Patrick Shephard | Head of Public Sector | Blue Prism

Patrick.shephard@blueprism.com

SS&C | blueprism[®]